

Owner's Manual

Parts Manual

Carter

A Better Built Machine.

**READ THIS MANUAL CAREFULLY,
IT CONTAINS IMPORTANT SAFETY INFORMATION.**



GSR150R2

**MINIMUM
RECOMMENDED
OPERATOR AGE: 16**



FOR OFF-ROAD USE ONLY

This vehicle is designed and manufactured for off-road use only.

USA only:

It does not conform to Federal Motor Vehicle Safety Standards, and in regards to operation on public streets, roads, or highways is illegal.

GSR 150 R 2 Limited Warranty

The warranty policy applies to those new units that are unloaded from its shipping container, setup, and delivered to, or by, an authorized dealer, and under normal use and service, is found to have defects in parts or workmanship under the following terms and conditions. This warranty covers the kart and engine related components for a period of 180 days.

This warranty does not apply to any part, which in opinion of seller was defective because of improper maintenance, improper assembly, alterations, abuse, negligence or accident.

Should warranty service be required on your GSR 150 R 2 during the 180 days warranty period, please contact your nearest authorized dealer for repairs.

What is not covered under this warranty

Misuse, Negligence, Alterations, Accidents or any abnormal use including non-genuine parts, renting or leasing, competition or racing. This warranty does not cover loss of use of the unit or loss of time, or inconvenience or normal wear and deterioration caused by the use or storage of consumable items such as - but not limited to - spark plugs, chain, brake shoes, fuses, clutch plates, sprockets, light bulbs, battery cables and tires.

CONTENTS

OWNER' S MANUAL

	Page
1. FOREWORD -----	1
2. A FEW WORDS ABOUT SAFETY -----	2
3. IMPORTANT SAFETY INFORMATION -----	3
4. SAFETY LABELS -----	5
5. ARE YOU READY TO DRIVE ? -----	6
6. IS YOUR VEHICLE READY TO DRIVE ? -----	7
7. SAFE DRIVING PRECAUTIONS -----	8
8. P.D.I. -----	10
9. SPECIFICATIONS -----	11
10. OPERATION -----	13
11. SERVICE INSTRUCTIONS -----	17
12. REPAIR -----	21
13. PERIODICAL CHECK AND SERVICE -----	23
14. WIRING DIAGRAM -----	24

PARTS MANUAL

	Figure
1. CYLINDER HEAD ASSY. -----	Fig. 1
2. CYLINDER ASSY. -----	Fig. 2
3. CRANKCASE ASSY. -----	Fig. 3
4. CRANKCASE ASSY.(2) -----	Fig. 4
5. CRANKSHAFT CON'ROD &PISTON ASSY. -----	Fig. 5
6. CAMSHAFT ASSY. -----	Fig. 6
7. LEFT COVER ASSY. -----	Fig. 7
8. FAN COVER AND SHROUD ASSY. -----	Fig. 8
9. OIL PUMP ASSY. -----	Fig. 9
10. DRIVEN PULLEY AND CLUTCH SUBASSY. -----	Fig.10
11. TRANSMISSION ASSY. -----	Fig.11
12. ELECTRIC SYSTEM -----	Fig.12
13. ELECTRIC STARTER ASSY. -----	Fig.13
14. DRIVE PULLEY SUBASSY. -----	Fig.14
15. CARBURETOR -----	Fig.15
16. FRAME GROUP -----	Fig.16
17. STEERING SHAFT ASSY. -----	Fig.17
18. SUSPENSION ARM ASSY. -----	Fig.18
19. GAS TANK/SEAT/BELT -----	Fig.19
20. REAR SWING ARM ASSY. UPPER -----	Fig.20
21. ENGING/MUFFLER/AIR CLEANER/OIL COOLER -----	Fig.21
22. REAR SWING ARM -----	Fig.22
23. REAR HOUSING -----	Fig.23
24. WIRE HARNESS/ELECTRICAL -----	Fig.24
25. REVERSE ASSY. -----	Fig.25
26. WARNING STICKERS -----	Fig.26

Thank you for purchasing a Carter Talon GSR 150 R 2. We hope you will enjoy your new kart. Before you start to operate your kart, please read through this Owner's Manual carefully as it contains important safety and maintenance information. Failure to follow the warnings contained in this manual can result in serious injuries or death.

Be sure to follow the recommended maintenance schedule and service your kart accordingly. Preventive maintenance is extremely important to the longevity of your kart.

Beginners should seek instructions from your dealer or qualified instructors before and during initial use of the kart. It is also recommended to practice in a large open area and to be familiar with the operations of this kart.

We hope you will have a pleasant experience with our products and thanks again for choosing a Carter kart.

A FEW WORDS ABOUT SAFETY


In order to keep everyone safe, you must take responsibility for the safe operation of your Kart.

To help you make informed decisions about safety, we have provided operating procedures and other information on labels and in this manual. This information alerts you of the potential hazards that could hurt you or others.

It is not practical or possible to warn you about all hazards associated with operating or maintaining a Kart. You must use your own good judgment.

You will find important safety information in a variety of forms, including:

Safety Labels – On the Kart.

Safety Messages – Preceded by a safety alert symbol  and one of two signal words: **WARNING**, or **CAUTION**.

These signal words mean:



Physical harm may result from failure to adhere to the instructions that are described within the **WARNING** labels.

Safety Headings — such as Important Safety Reminders or Important Safety Precautions.

Safety Section — such as Kart Safety.

Instructions — how to use this Kart correctly and safely.

This entire manual is filled with important safety information—please read it carefully.

IMPORTANT SAFETY INFORMATION

Your Kart will provide you with many years of service and pleasure. Providing you take responsibility for your own safety and understand the challenges you can meet while driving.

There is much that you can do to protect yourself while operating your kart. You'll find many helpful recommendations throughout this manual. The following are a few that we consider most important.

Follow the Age Recommendation

Adult Supervision should be present for all people under the age of 16.

Always Wear a Helmet

It's a proven fact: helmets significantly reduce the number and severity of head injuries. Always wear an approved motorcycle helmet. We also recommend that you wear eye protection, sturdy boots, gloves, and other protective gear.

Drive Off-Road Only

Your Kart is designed and manufactured for off-road use only. The tires are not made for pavement, and the Kart does not have turn signals and other features required for use on public roads. If you need to cross a paved or public road, get off and walk your Kart across.

Take Time to Learn & Practice

Even if you have driven other Karts, take time to become familiar with how this Kart works and handles. Practice in a safe area until you build your skills and get accustomed to this Kart's size and weight.

Because many accidents involve inexperienced or untrained drivers, we urge all drivers to take a training course approved by the Go-Kart Safety Institute. Check with your dealer for more information on training courses.

Be Alert of Off-Road Hazards

The terrain can present a variety of challenges when you drive off-road. Continually "read" the terrain for unexpected turns, drop-offs, rocks, ruts, and other hazards. Always keep your speed low enough to allow time to see and react to hazards.

IMPORTANT SAFETY INFORMATION

Drive within Your Limits

Pushing limits is another major cause of Kart accidents. Never drive beyond your personal abilities or faster than conditions warrant. Remember that alcohol, drugs, fatigue, and inattention can significantly reduce your ability to make good judgments and drive safely.

Don't Drink and drive

Alcohol and driving don't mix. Even one drink can reduce your ability to respond to changing conditions, and your reaction time gets worse with every additional drink. So don't drink and drive, and don't let your friends drink and drive either.

Do not operate this Kart at night.

Dark vision can greatly reduce a driver's visibility and judgment. So driving at night is dangerous and can increase the possibility for an accident.

Never run your Kart indoors.

The exhaust from the engine contains a tasteless, odorless and poisonous gas called carbon monoxide.

Keep away from moving parts of the Kart

The operator of the Kart should never place their hands or other parts of their body near any moving part of the Kart. Failure to adhere to this warning will cause physical harm to your body.

Skidding or Sliding

The terrain surface can be a major factor affecting turns. Skidding in a turn is more likely to occur on slippery surfaces such as snow, ice, mud and loose gravel. If you skid on ice, you may lose all directional control. To avoid skidding on slippery terrain, keep you speed low and drive carefully.

SAFETY LABELS

This section presents some of the most important information and recommendations to help you drive your Kart safely. Please take a few moments to read these pages.

The labels should be considered permanent parts of the Kart. If a label comes off or becomes hard to read, contact your dealer for warning label replacements.



ARE YOU READY TO DRIVE ?

Before each drive, you need to make sure you and your Kart are both ready to drive. To help get you prepared, this section discusses how to evaluate your driving readiness, what items you should check on your Kart, and adjustments to make for your comfort, convenience, or safety.

Before you drive your Kart for the first time, we urge you to:

- Read this owner's manual and the labels on your Kart carefully.
- Make sure you understand all the safety messages.
- Know how to operate all the controls.
- Have adult present if under 16 years old.

Before each drive, be sure:

- You wear your seat belt all times while driving your kart.
- You feel well and are in good physical and mental condition.
- You are wearing an approved motorcycle helmet (with chin strap tightened securely), eye protection, and other protective clothing.
- You don't have any alcohol or drugs in your system.

Protective Apparel

For your safety, we strongly recommend that you always wear an approved motorcycle helmet, eye protection, boots, gloves, long pants, and long-sleeved shirt or jacket whenever you drive.

Although complete protection is not possible, wearing proper gear can reduce the chance of injury when you drive.

The following suggestions will help you choose the proper driving gear.

Helmets and Eyes Protection

Your helmet is your most important piece of driving gear because it offers the best protection against head injuries. A helmet should fit your head comfortably and securely.

An open-face helmet offers some protection, but a full-face helmet offers more. Regardless of the style, look for a DOT (Department of Transportation) sticker on any helmet you buy. Always wear a face shield or goggles to protect your eyes and help your vision.

WARNING

Operating this Go-Kart without wearing an approved motorcycle helmet, eye protection, and protective clothing could increase your chances of head and/or eye injury, and the possibility of death in the event of a severe accident.

Always wear an approved motorcycle helmet that fits properly and wear eye protection (goggles or face shield), gloves, boots, long-sleeved shirt or jacket and long pants.

Additional Driving Gear

In addition to a helmet and eye protection, we also recommend:

- Sturdy off-road motorcycle boots to help protect your feet, ankles, and lower legs.
- Off-road motorcycle gloves to help protect your hands.
- Driving pants with knee and hip pads, a driving jersey with padded elbows, and a chest/shoulder protector.

Driver Training

Developing your driving skills is an on-going process. Even if you have driven other Karts, before take time to become familiar with how this Kart works and handles. Practice driving the Kart in a safe area to build your skills. Do not drive in rough terrain until you get accustomed to the Kart's controls, and feel comfortable with its size and weight.

ARE YOU READY TO DRIVE ?

WARNING

Operating this Kart without your seat belt could cause you to be thrown from the kart, causing serious injury or death.

Age Recommendation

It is strongly recommended that no one under the age of 16 be permitted to operate this Go-Kart without adult supervision.

WARNING

A child driving a Kart that is not recommended for his/her age could lose control of the Kart and result in severe injury or death.

A child under 16 should have adult supervision when operating the Kart.

No Alcohol or Drugs

Alcohol, drugs and Karts don't mix. Even a small amount of alcohol can impair your ability to operate a Kart safely. Likewise, drugs-even if prescribed by a physician-can be dangerous while operating a Kart. Consult your doctor to be sure it is safe to operate a vehicle after taking medication.

WARNING

Operating this Kart after consuming alcohol or drugs can seriously affect your judgment, cause you to react more slowly, affect your balance and perception, and could result in serious injury or death.

Never consume alcohol or drugs before or while operating this Kart.

IS YOUR VEHICLE READY TO DRIVE ?

Before each drive, it is important to inspect your Kart and make sure any problems you find are corrected. A pre-drive inspection is a must, not only for safety, but because having a breakdown, or even a flat tire, can be a major inconvenience.

If your Kart has overturned or has been involved in a collision, do not drive it until your Kart has been inspected by your dealer. There may be damages or other problems you can not see.

WARNING

Improperly maintaining this Kart or failing to correct a problem before driving can cause a crash in which you can be seriously hurt or killed.

Always perform a pre-drive inspection before every drive and correct any problems.

SAFE DRIVING PRECAUTIONS

Off-Road Use Only

Your kart and its tires are designed and manufactured for off-road use only, not for use on paved surfaces. Driving on paved surfaces can affect the kart handling and control.

WARNING

Operating this kart on paved surfaces may seriously affect handling and control of the kart, and may cause the vehicle to go out of control.

Never operate the kart on any paved surfaces, including sidewalks, driveways, parks lots and streets.

When driving off-road, also remember to always obey local off-road driving laws and regulations. Obtain permission to drive on private property. Avoid posted areas and obey "no trespassing" signs.

You should never drive your kart on public streets, roads or highways, even if they are not paved. Drivers of street vehicles may have difficulty seeing and avoiding you, which could lead to a collision.

WARNING

Operating this kart on public streets, roads or highways could cause a collision with another vehicle.

Never operate this kart on any public streets, roads or highways, whether they are dirt, gravel or paved surfaces.

Keep Hands and Feet on Controls

When driving your kart, always keep both hands on the steering wheel and both feet on the foot controls. It is important to maintain your balance and to control the kart. Removing hands or feet away from the controls can reduce your ability to react and control the kart.

WARNING

Removing your hands from the steering wheel or feet from the foot controls during operation can reduce your ability to control the kart or could cause you to lose your balance and fall off the kart.

Always keep both hands on the steering wheel and both feet on the foot controls of your kart during operation.

SAFE DRIVING PRECAUTIONS

Control Speed

Driving at excessive speed increases the chance of an accident. In choosing a proper speed, you need to consider the capability of your Kart, the terrain, visibility and other operating conditions, plus your own skills and experience.

WARNING

Operating this Kart at excessive speeds increases your chances of losing control of the Kart, which can result in an accident.

Always drive at a speed that is proper for your Kart, the terrain, visibility and other operating conditions, and your experience.

Use Care on Unfamiliar or Rough Terrain

Before driving in a new area, always check the terrain thoroughly. Don't drive fast on unfamiliar terrain or when visibility is limited. (it's sometimes difficult to see obstructions like hidden rocks, bumps, or holes in time to react.)

WARNING

Failure to use extra care when Operating this Kart on unfamiliar terrain could result in the Kart overturning or going out of control.

Go slowly and be extra careful when operating on unfamiliar terrain. Always be alert to changing terrain conditions when operating the Kart.

Never drive past the limit of visibility. Maintain a safe distance between your Kart and other off-road vehicles. Always exercise caution and use extra care on rough, slippery and loose terrain.

WARNING

Failure to use extra care when operating on excessively rough, slippery or loose terrain could cause loss of traction or vehicle control, which could result in an accident, including an overturn.

Do not operate on excessively rough, slippery or loose terrain until you have learned and practiced the skills necessary to control the Kart on such terrain. Always be especially cautious on these kinds of terrain.

Do Not Perform Stunts

You should always operate your Kart in a safe and reasonable manner. When driving, always keep all four wheels on the ground.

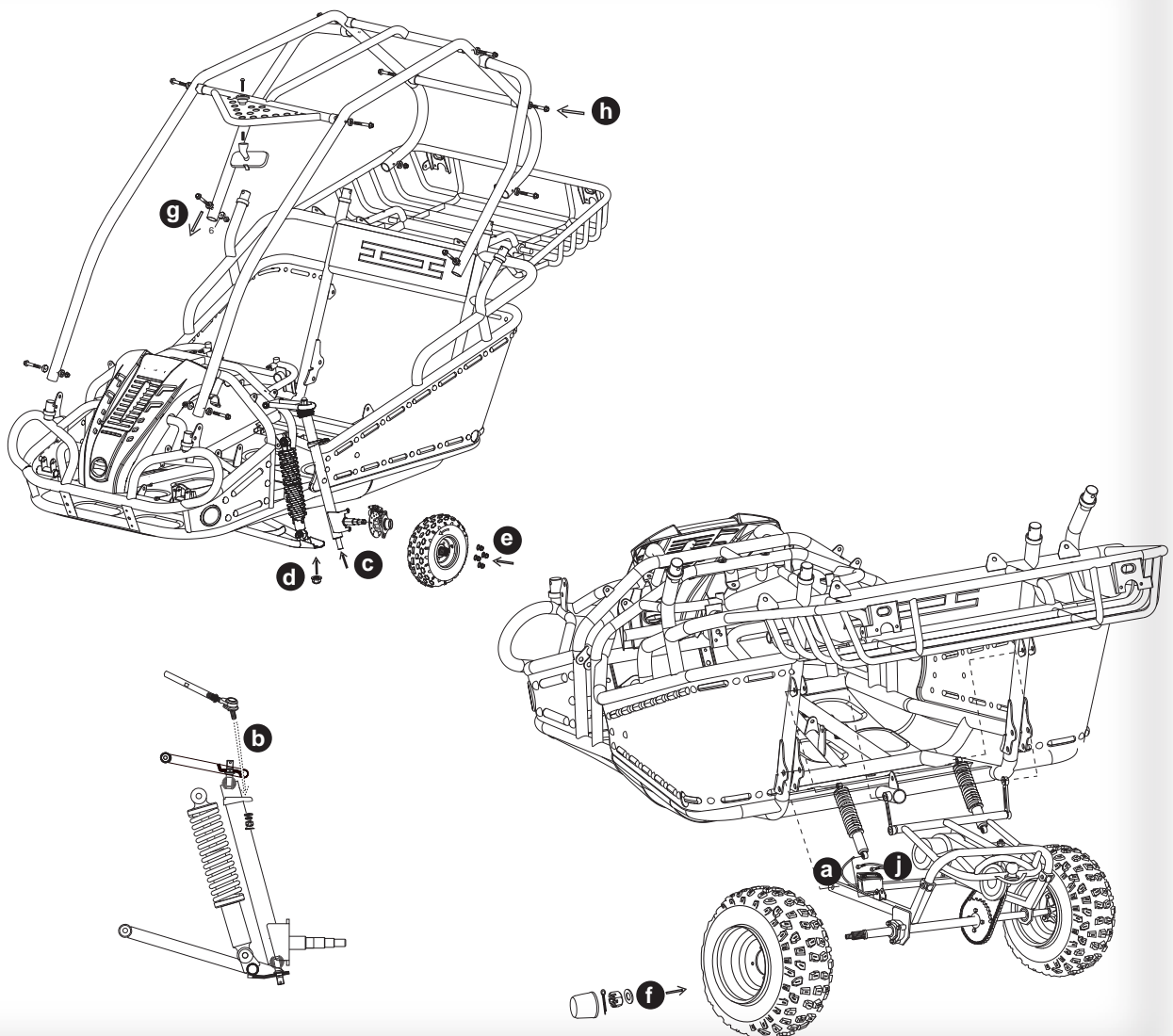
WARNING

Attempting wheelies, jumps, and other stunts increases the chance of an accident, including an overturn.

Never attempt stunts, such as wheelies or jumps. Don't try to show off.

P.D.I.

- a. Install RR. Shocks and tighten the nuts.
- b. Install Ball Head, Tie Rod, tighten the Castle Nut and insert the Cotter Pin.
- c. Install Dust Seals, align the Ball Head Bolt, Knuckle Support to the square hole on the Lower A-Arm.
- d. Install Flange Nut and tighten it (> 88.9 foot lbs).
- e. Install Front Tires and tighten the nuts.
- f. Install Rear Tires, tighten the nuts, insert Cotter Pin and put on the Rubber Cover.
- g. Raise the C.B.C custom bar cage as the picture shows.
- h. Install C.B.C custom bar cage RR., put on R-Washer.
- i. Install Head-Rest.
- j. Check all nuts and bolts, wiring, cables, fuel line, switches and tire pressure.
- k. Fill battery with acid and charge, check and fill the engine with the recommended oil.



SPECIFICATIONS

DIMENSIONS

Overall Length -----	88.2 in. (2240mm)
Overall Width -----	55.9 in. (1420mm)
Overall Height -----	57.1 in. (1450mm)
Wheelbase -----	59 in. (1500mm)
Front Track -----	45.7 in. (1160mm)
Rear Track -----	39.4 in. (1000 mm)
Ground Clearance -----	6.7 in. (170mm)

ENGINE

Type -----	Forced air-cooled. 4-Stroke
Engine capacity -----	149.89 cc
Bore / Stroke -----	57.4mm x 57.8mm
Displacement -----	149.6cm ³
Corrected compression ratio -----	9.2:1
Carburetor -----	KF,CB24J
Output Power -----	7.4Kw/7500 rpm
Maximum Torque -----	13/5500 foot lbs/r/min
Starting -----	Electric
Ignition -----	C.D.I.
Lubrication -----	Force & Splash
Transmission -----	Automatic (C.V.T system)
Spark plug -----	C7HSA(NGK)
Plug gap -----	0.6-0.7mm
Fuel Type -----	RQ90 (unleaded)
Lubricate oil -----	SAE-10W/40

CAPACITIES

Maximum load-----	Double Seat/400lbs
Fuel tank -----	1.75 Gal
Engine oil -----	600 mL
Starting -----	< 5s
Climbing -----	20° - 25°
Battery -----	12V 10Ah
Head Light -----	12V 35W/35W
Tail Light -----	12V 21W/5W
Fuse -----	10A

SPECIFICATIONS

Brake Track ----- < 7 m@20miles/h
Top speed ----- 30 miles/h(or limited as customers require)

CHASSIS

Front, Rear brake ----- Hydraulic disc, left foot control
Front tire ----- 20 x 7-8
Rear tire ----- 22 x 10 -10
Front Suspension ----- Independent Dual A-Arm
Rear Suspension ----- Swing Arm/Double Oil Damped Shock
Restraint System ----- Dual 4-point Harness
Final Drive Chain ----- (KMC) O-Ring Chain

TIRE PRESSURE

Front -----147kPa 1.5kg/cm² 3psi
Rear -----196kPa 2.0kg/cm² 4psi

WEIGHT

Net Weight ----- 465 lbs

A. Operation controls

WARNING - Do not attempt to start or operate the engine until completely familiar with the location and use of each control necessary to operate this vehicle. The operator must know how to stop this machine before starting and driving it.

a. Throttle

The right foot pedal is the throttle that controls the Kart speed. As the engine speed increases above idle, the clutch automatically engages and moves the vehicle forward. To disengage the clutch at any time, allow the throttle to return to the idle position.

(See Fig. 1)

! WARNING

Each time prior to starting the engine, check the throttle assembly to ensure that when the pedal is pushed all the way forward the assembly is working smoothly and returns to idle when released. Do not operate if pedal or engine throttle linkage fail to return to idle. If unable to correct the problem through lubrication, adjustment or replacement of worn parts, contact your dealer for assistance.

b. Brake

The brake is located on the left side of the kart (See Fig.1). Applying pressure to the pedal draws the brake caliper around the brake pump at the rear wheel and slows or stops the kart.

c. Start engine

Insert the key into key-switch, turn the key clockwise, release the key when the engine starts. The engine will warm up within 5 minutes and the engine choke will close automatically and operate at the normal RPM (Warning: Don't crank starter more than 5 seconds at one time).

d. Engine stop button

Important-stop button test.

Before driving this vehicle, test the Engine Stop Button to assure that it is operating properly. With the engine running, push and hold the Engine Stop Button for two seconds for the engine to shut down.

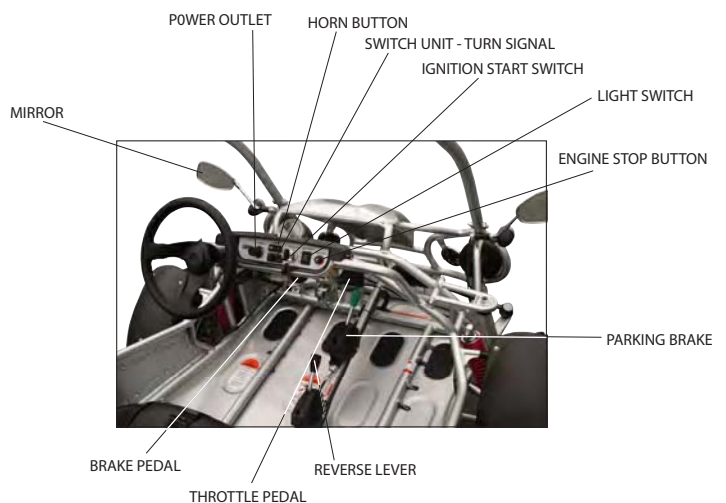


Figure 1

OPERATION

B. Pre-Drive Inspection



WARNING

Perform this pre-drive inspection everyday before driving vehicle. If not performed, serious damage to the vehicle or personal injury may result.

- a. Check for Engine Oil Level. Check for leaks, add oil if required.
- b. Check for Fuel Level. Add fuel as necessary and do not overfill. Check for leaks.
- c. Check for Brakes. Depress the rear brake pedal several times, then check for proper brake pedal freeplay. Make sure there is no brake fluid leakage. Adjust if necessary.
- d. Check Tires. Check tires condition and pressure. The pressure on both Front and Rear tire is 5 and 8 lbs respectively.
- e. Check the Drive Chain. Check for drive chain's condition and tension. Lubricate if necessary.
- f. Check Throttle. Check for smooth operation. Assure throttle "snaps" back to idle.
- g. Check Engine Stop Button. Perform engine stop button test. Repair as necessary.
- h. Check all Nuts, Bolts, and fasteners. Check wheels to see that all axle nuts and lug nuts are tightened properly. Check and tighten as necessary all other fasteners to specified condition.
- i. Check the Custom Bar Cage (C.B.C.). Ensure all protective C.B.C. bars are in place before operating the Kart.
- j. Check Brake Light. Check for proper operation.
- k. Check Wheels. Check for tightness of wheel nuts and axle nuts; check that axle nuts are secured by Cotter Pins.
- l. Check steering. Check for free operation for any unusual looseness in any area.



CAUTION

Always follow rules for safe operation and wear a helmet.

Component locations

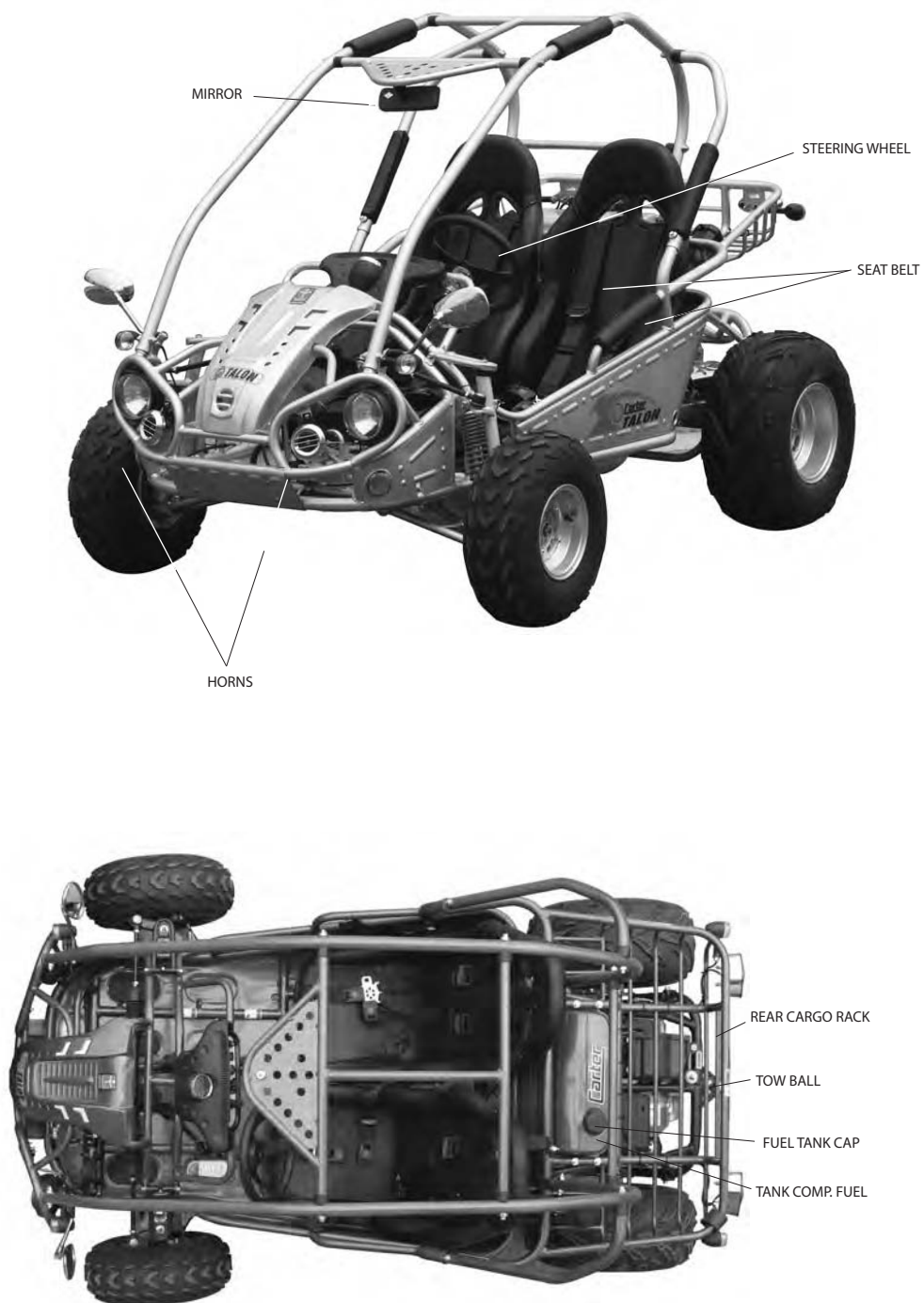


Figure 2

OPERATION

C. Passengers

The vehicle allows for two riders only. Combine maximum weight of driver and the passenger should not exceed 180kg or 400lbs.

D. Seat Adjustment

The seat must always be securely fastened in the position which best affords the operator control of the foot pedals, steering wheel, and the remote stop button.

- Pull seat adjustment handle upward to disengage seat slide.
- Move seat to desired position.
- Be sure seat adjustment handle snaps back into place and that seat is locked into position.

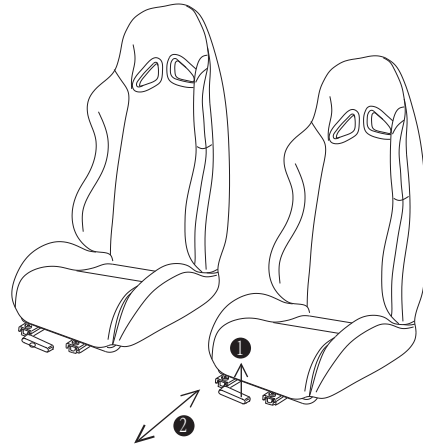


Figure 3

! WARNING

Before attempting to adjust the seat, ensure that kart engine is stopped.

! WARNING

Never operate this Kart when the provided seat is not securely fastened, to do so could result in a strong possibility of severe personal injury or loss of life. Before attempting to adjust the seat, ensure the kart engine is stopped.

E. Reverse Adjustment

- Push forward the reverse lever to the "D" position so that the unit can move forward, pull back the lever to "R" so that the unit can move backward. (See Fig.4)
- When reverse lever is in the drive position, there needs to be 1/2 inch of freeplay in the reverse level. If the adjustment is not correct, then loosen the lock nut #2, then adjust lock nut #1 to the proper amount of freeplay. Sometimes you may need to adjust the freeplay more or less than 1/2 inch.

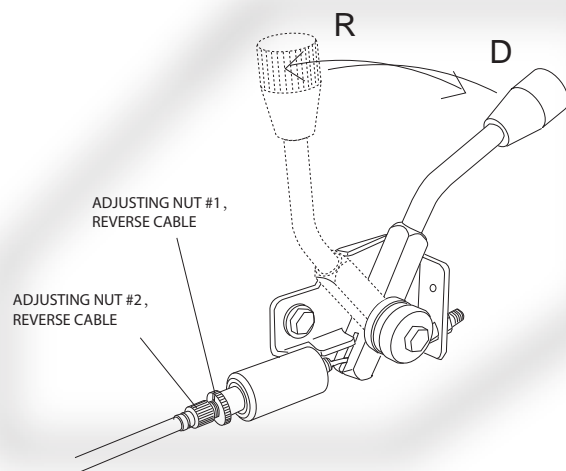


Figure 4

Always stop the kart before changing gears.

OPERATION/SERVICE INSTRUCTIONS

F. Starting And Operating Instructions

- a. Before starting the engine, be sure that the driver is seated properly in the Kart with the seat belt.
- b. Testing the Kart in an open space at the beginning to learn how to start, turn and stop.
- c. Operate the Kart slowly until you are familiar with it.
- d. The turning radius of this Kart is small and agile, so the centrifugal force is very high when turning at high speed. Slow down to a more controllable speed when turning to prevent the Kart from rolling over.
- e. To prevent vehicle from rolling over, be sure to only turn the vehicle at slow, controllable speeds. Keep your heel on the ramp of the main board when turning. (See Fig.5) Keep your foot on the foot pedal at all times.



Figure 5

SERVICE INSTRUCTIONS

A. Service Air Filter

Service air filter every 20 hours

NOTE: Service more often under dusty conditions.

- a. Remove the air filter cover
- b. Remove the air filter element 2 (See Fig.6)
- c. Blow clean the air filter with compressed air or replace as needed.

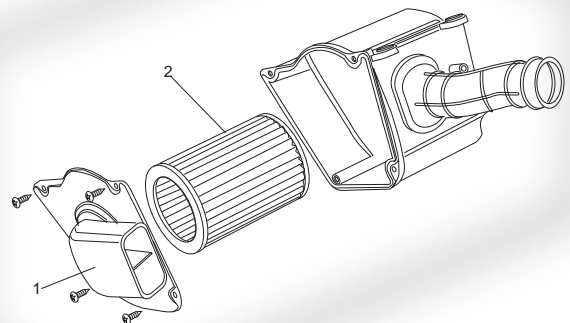


Figure 6

SERVICE INSTRUCTIONS

B. Engine Lubrication

You must change the oil in the crankcase after the first 5 hours of operating your new engine (See Fig. 7) and after 10 hours of use thereafter. This will insure proper lubrication of internal parts and prevent costly repairs due to excessive wear.



- a. Remove drain plug located on the right rear side of engine. Tip kart backwards slightly by blocking up the front end and drain oil into suitable container.
- b. Remove and clean Oil Screen.
- c. Replace drain plug and tighten securely. Place kart in a level position.
- d. Refill crankcase (approximately 600 mL) with SAE 10W40 oil. Use the same grade of oil as used originally.
- e. Check oil level before each use of kart or after each 10 hours of operation. Add oil to bring up to proper level. Do not mix various grades of oil.

C. Spark Plug

- a. Remove the spark plug and inspect it each time you change the oil (use a spark plug wrench). The electrodes should be kept clean and free of carbon. The presence of carbon or excess oil will greatly reduce proper engine performance. If possible, check the spark plug gap (area between electrodes) using a wire feeler gauge. This specification is 0.6~0.7mm.
- b. Before installing spark plug, if possible, coat threads lightly with graphite grease, to ensure easy removal next time the spark plug needs inspection.
- c. It is advisable to replace the spark plug at least once a year to insure easy starting and good engine performance.

Figure 7

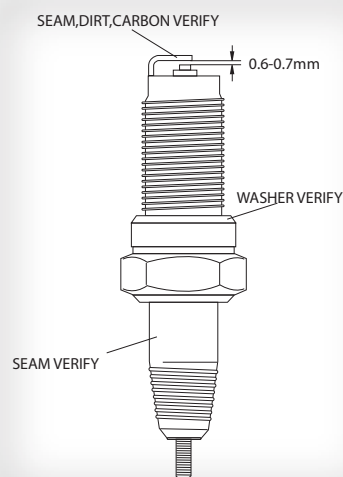


Figure 8

D. Carburetor Adjustment

Never make unnecessary adjustments. The factory recommended settings are correct for most applications.

SERVICE INSTRUCTIONS

- a. Warm up the engine (5~10min).
- b. Tighten the air screw gently. Backout 2-3/8 turns counter clockwise.
- c. Connect the tachometer, adjust the throttle to limit the idle speed. The standard value is (1400RPM).
- d. Turn the air screw counter clockwise slowly and observe the RPM of the engine, stop adjusting as the RPM reaches the top speed.
- e. Adjust the screw and adjust the idle speed to an ideal value.
- f. Recheck and readjust the idle speed if necessary.

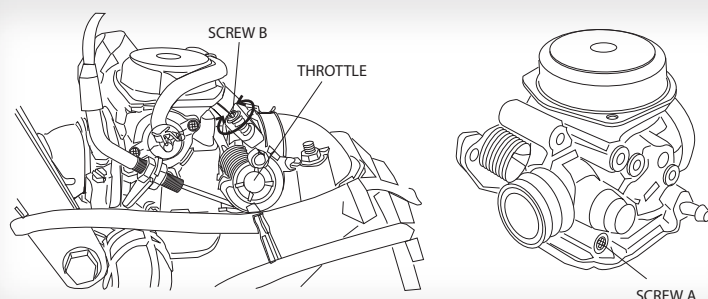


Figure 9

E. Cleaning Instructions

Keep your kart clean. With a clean rag, wipe off any dirt or oil from around controls. Wipe off any spilled fuel or oil. Keep the engine clean of foreign objects, and be sure to check the air intake fan to insure that it is free of debris for proper cooling.

F. Kart Lubrication

Lubricate vehicle every 90 days of use. Lubrication should be done sooner, if kart is used everyday.

G. Chain Lubrication

To increase chain life, it should be lubricated with a spray on type chain lubricant. (See Fig. 10)

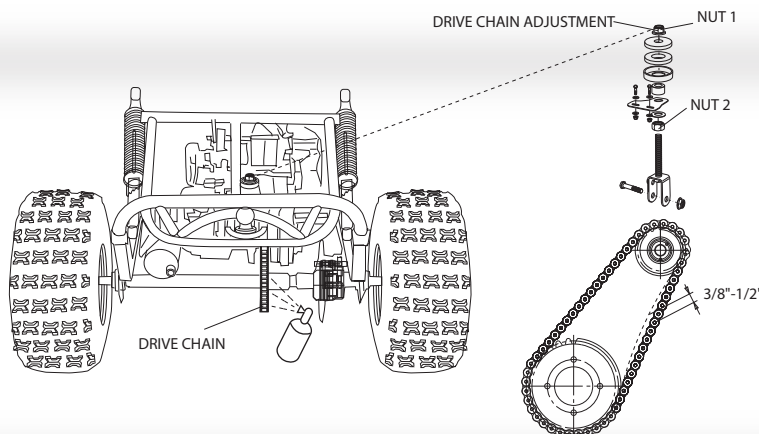


Figure 10

SERVICE INSTRUCTIONS

H. Chain Adjustment

Check the chain adjustment after first two hours of use. Readjust if it has more than 1/2" flex.

- a. Loosen Nut #1.
- b. Adjust Nut #2. Turn Nut #2 clockwise in 1/2 turn increments, then turn nut #1 until tight.

Follow this procedure until chain is at proper tension (See Fig. 10).

- c. Repeat the above two steps until chain is adjusted to desired fit.

I. Adjustment of Front And Rear Shock

There are five adjustable positions on each shock.

The default position is in the middle and is set by the manufacturer (See Fig. 11).

Use a round nut wrench as you adjust the shock, the tension of the shock spring will increase as you screw to left, decrease as you screw to right. Adjust according to the weight of the riders.

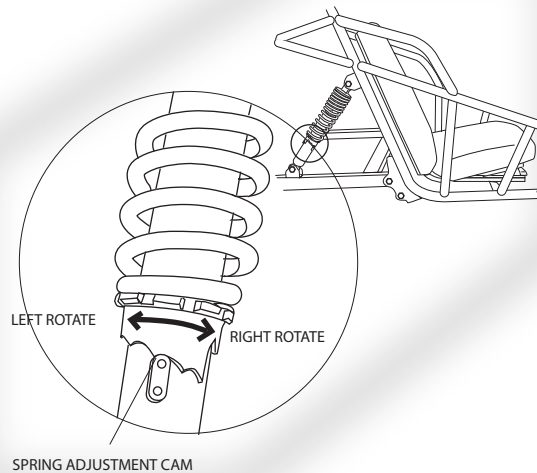


Figure 11

J. Storage Instruction

In the event your kart is not to be operated for a period in excess of 30 days, or, at the end of each driving season, prepare for storage as follows:

- a. Drain fuel tank and carburetor by allowing engine to run out of fuel, and use a fuel stabilizer.
- b. Lubricate engine cylinder by removing the air cleaner, then spray engine fogging oil through the carburetor until motor dies.
- c. Do not save or store gasoline over winter. Using old gasoline, which has deteriorated from storage, will cause hard starting and affect engine performance.

WARNING

Do not drain fuel while engine is hot. Be sure to move Kart outside before draining fuel.

A. Front Wheel Replacement

Do not disassemble the castle nuts when you replace the front wheels.

It is only necessary to remove the 4 lug nuts to remove the wheel. (See Fig. 12)

Tighten the nuts after replacing the wheels.

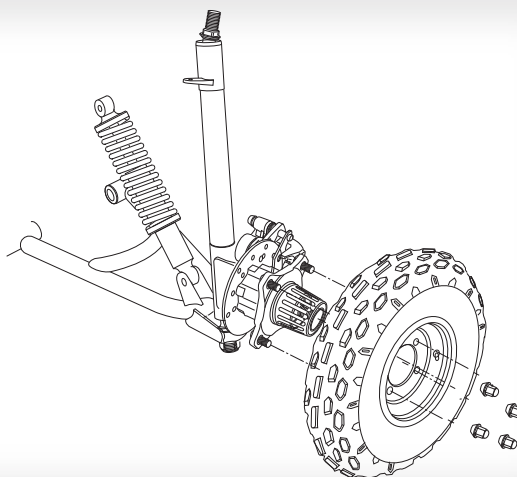


Figure 12

B. Rear Wheel Replacement

Do not disassemble the castle nuts when you replace the rear wheels and hub assembly.

Remove the Cotter Pin and then 24mm nut. Then slide off wheel and hub assembly.

It is only necessary to remove the 4 lug nuts to remove the wheel by itself. (See Fig.13)

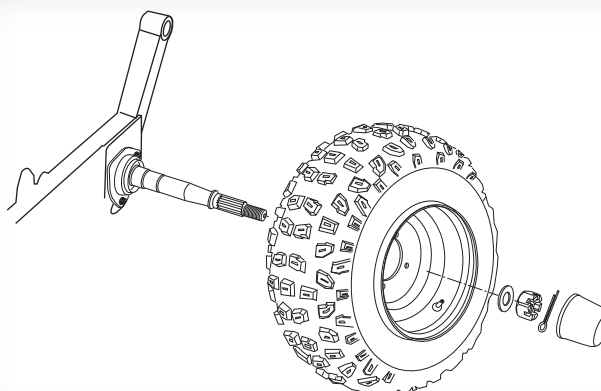


Figure 13

C. Front Wheel Alignment

a. The front wheels should be “toe-in” from 1/8” to 1/4”. To check for alignment, measure distance A and B between the centerline (CL) of the wheels. The proper toe-in dimension A should be 1/8” – 1/4” greater than dimension B.

b. To adjust the alignments, loosen the lock nuts on both sides of the Front Tie Rods. To make Dimension B smaller, turn the rod to left. Adjust the rod to right direction to make Dimension B larger. After adjusting to the desired length, tighten the lock nut against the rod end. Recheck the dimensions for proper alignment.

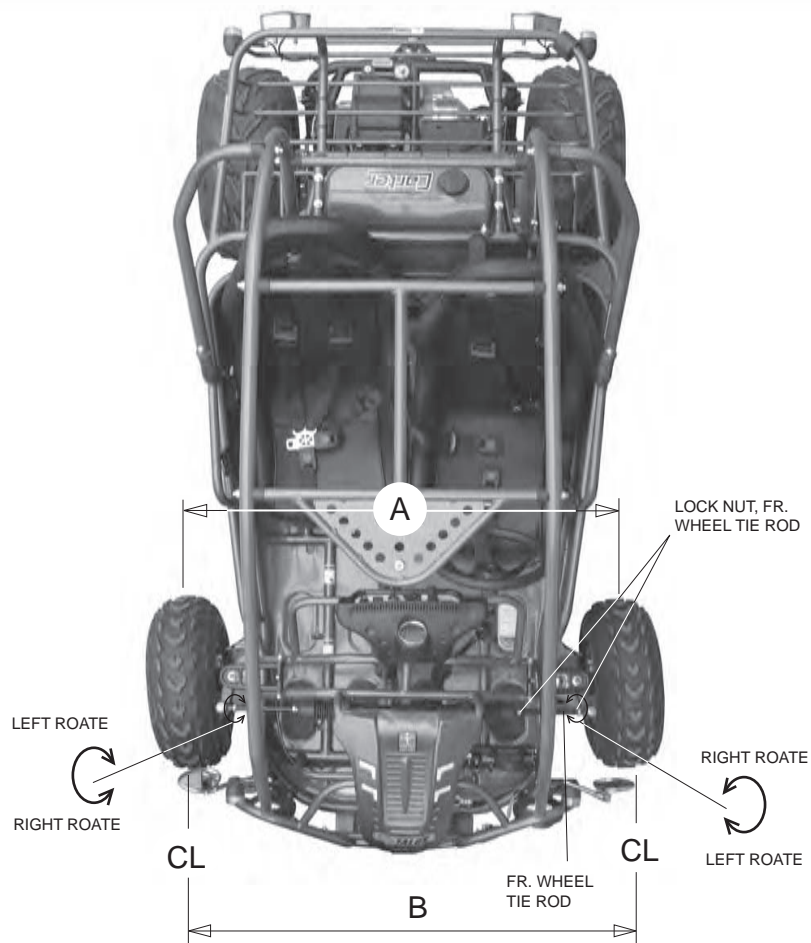


Figure 14

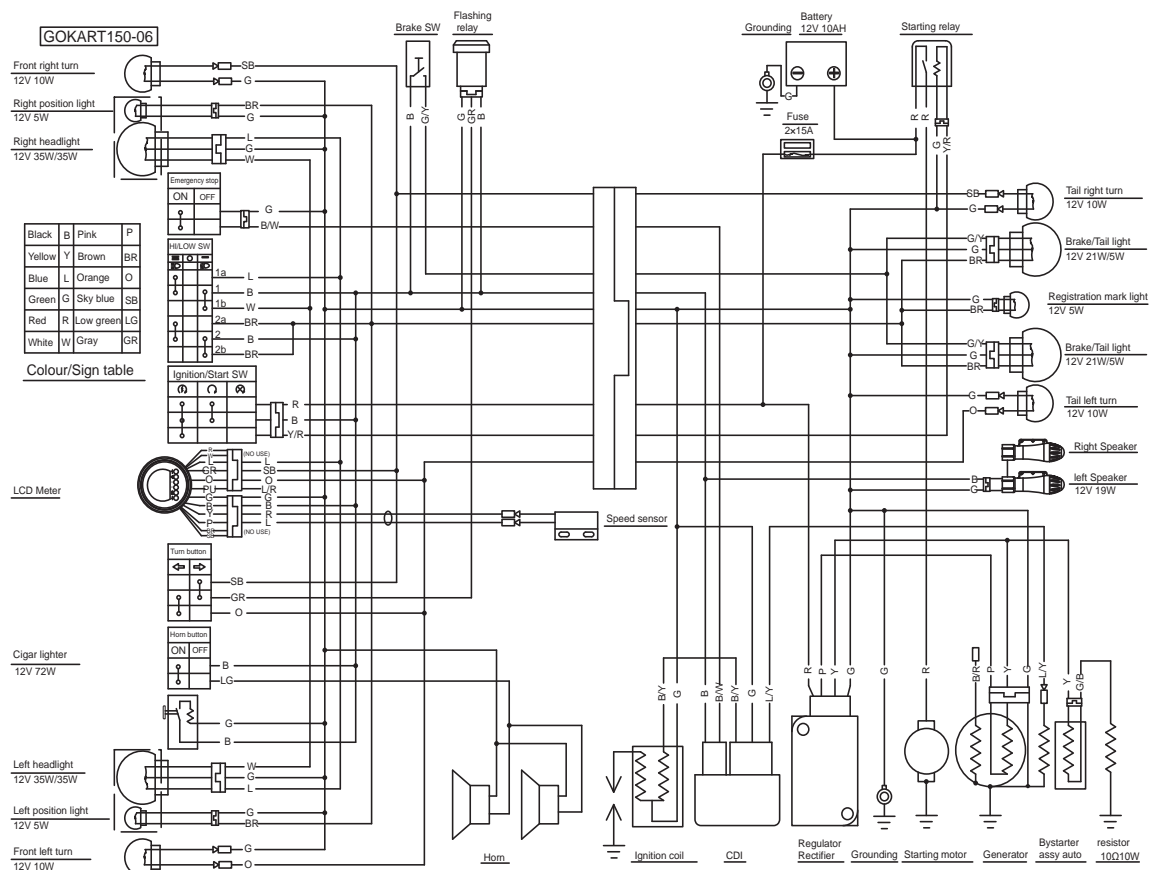
PERIODICAL CHECK AND SERVICES

The maintenance intervals in the following table are based upon average driving conditions. Driving in unusually dusty areas, requires more frequent servicing.

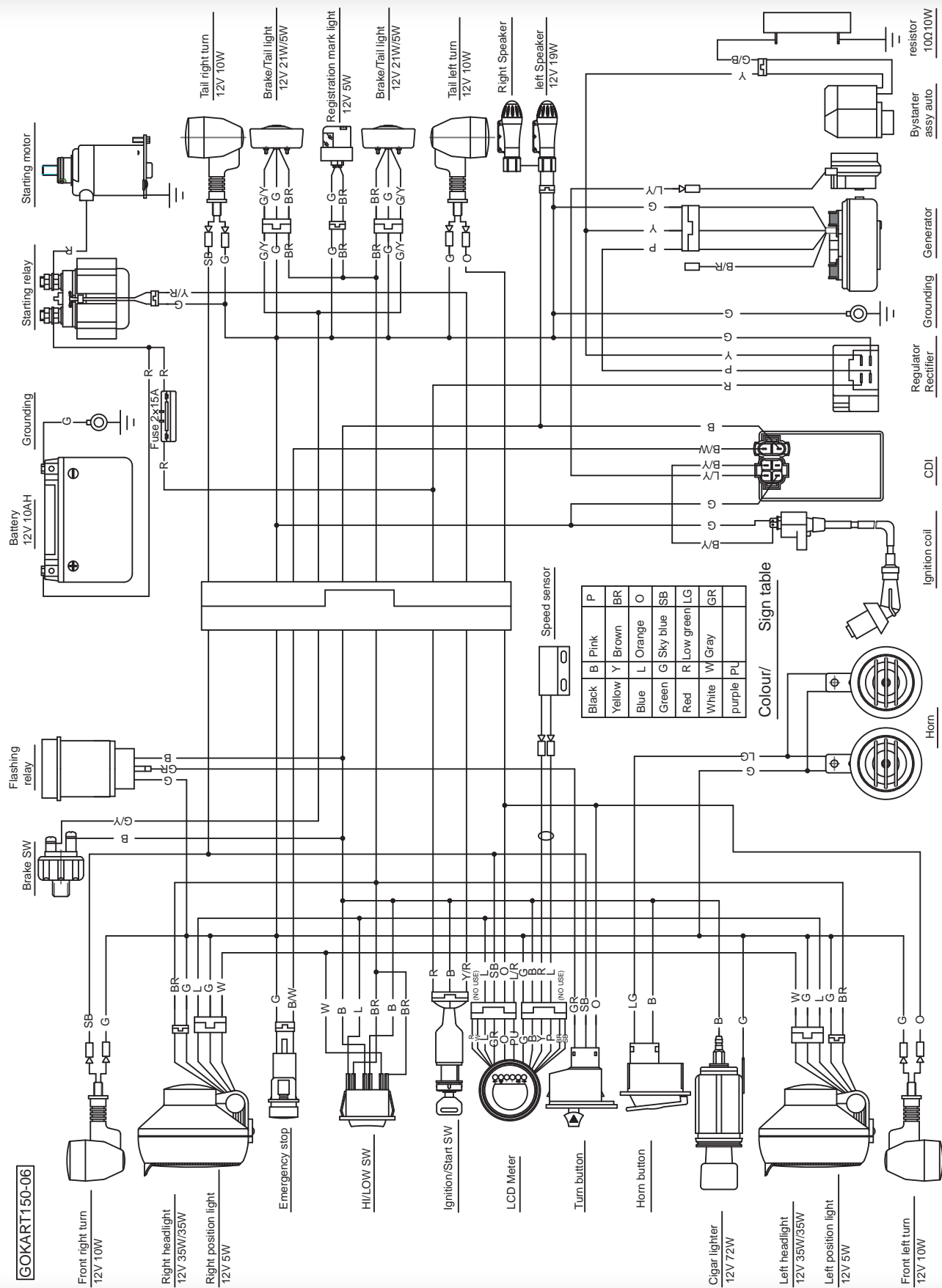
Items \ Time of service	Initial service (first week)	Monthly	Quarterly	Yearly
Tire pressure/wear	I	I		
Brake performance	I	I		
Tightness of screws	I	I		
Air cleaner		C		R
Carburetor	I			C
Spark plug			C, A	
Coolent				
Brake oil	I	I	I	
Replace gearbox oil		C, I	R	
Chassis	I	I	L	
Fuel switch/fuel tank		I		C
Battery			I	
Valve clearance of engine			A	
Oil Change			R	

A: Adjust **C:** Clean **I:** Inspect (clean or replace if necessary) **L:** Lubricate **R:** Replace

WIRING DIAGRAM



WIRING DIAGRAM



COMPONENT LOCATIONS

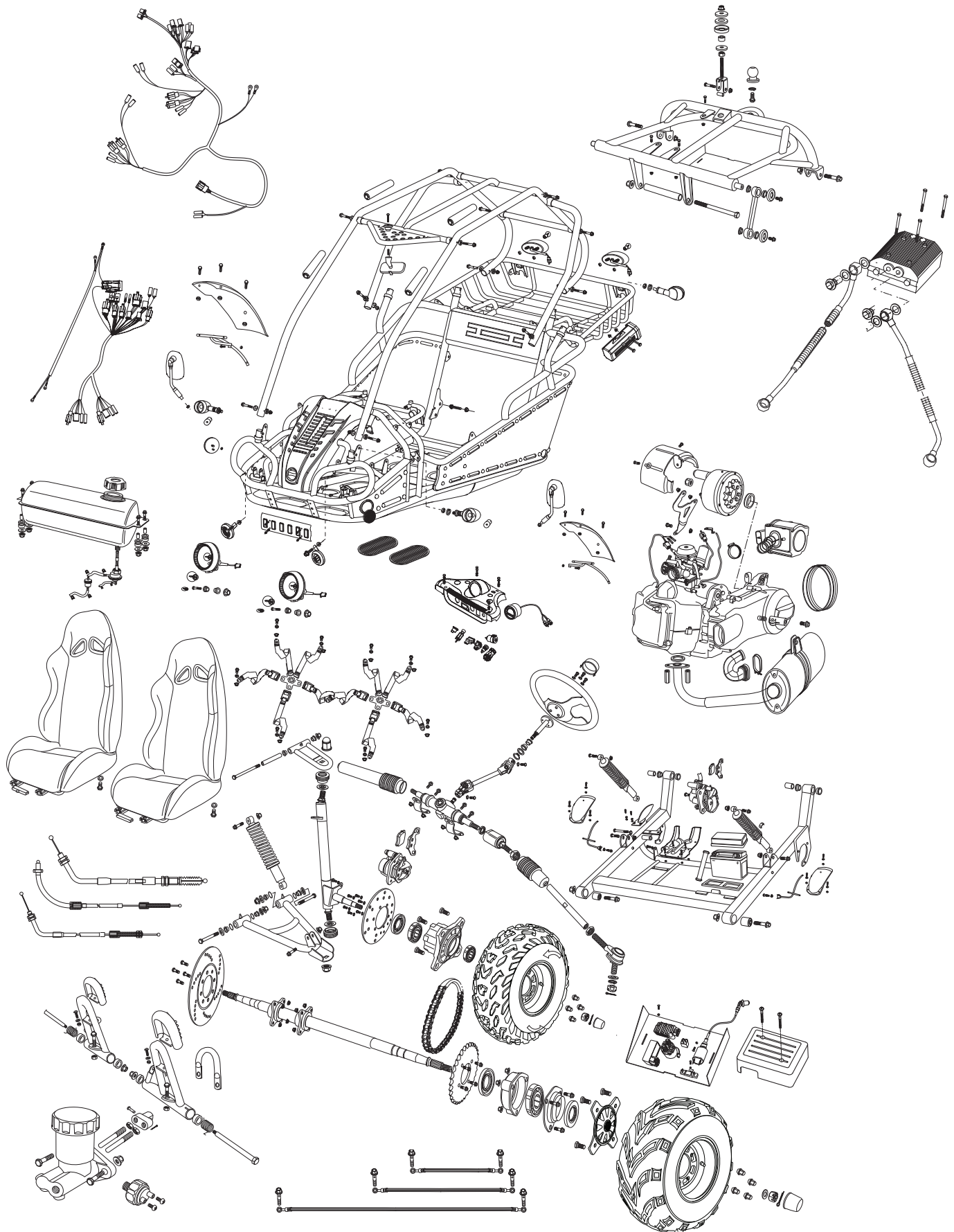


FIG. 1

CYLINDER HEAD ASSY.

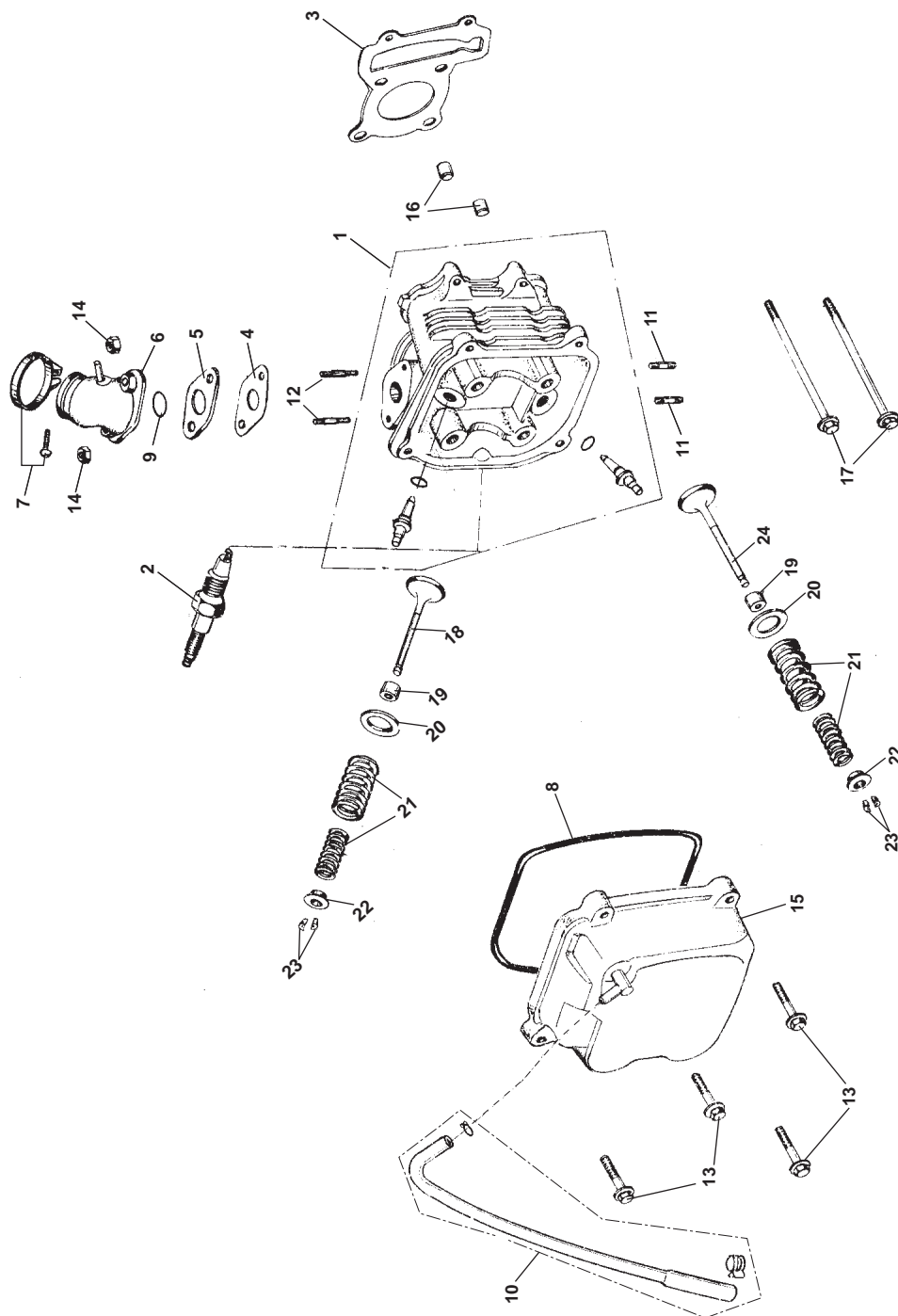


Fig. 1 CYLINDER HEAD ASSY.

[illegible]

CYLINDER ASSY.

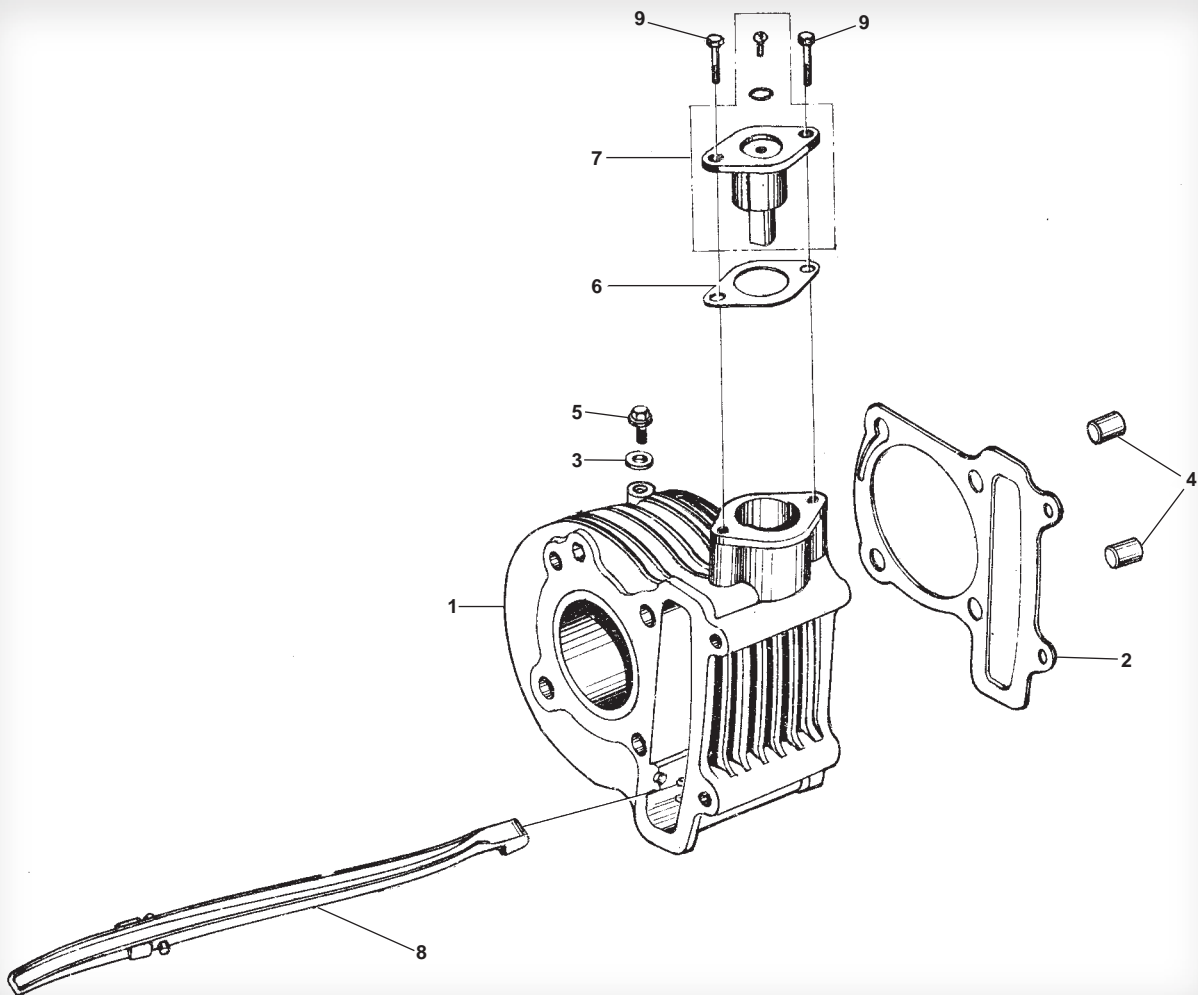


Fig. 2 CYLINDER ASSY.			
REF NO.	PART NO.	DESCRIPTION	REQ. NO.
1	513-1013	CYLINDER COMP.	1
2	513-1014	GASKET CYLINDER	1
3	500-1305	WASHER SEALING 6	1
4	500-1002	PIN DOWEL 10X16	2
5	500-1306	BOLT FLANGE M6X12-ZN. D	1
6	513-1015	GASKET TENSIONER LIFTER	1
7	513-1016	LIFTER ASSY. TENSIONER	1
8	513-1017	GUIDE COMP. CAM CHAIN	1
9	500-1307	BOLT FLANGE, 6X20	2

CRANKCASE ASSY. (1)

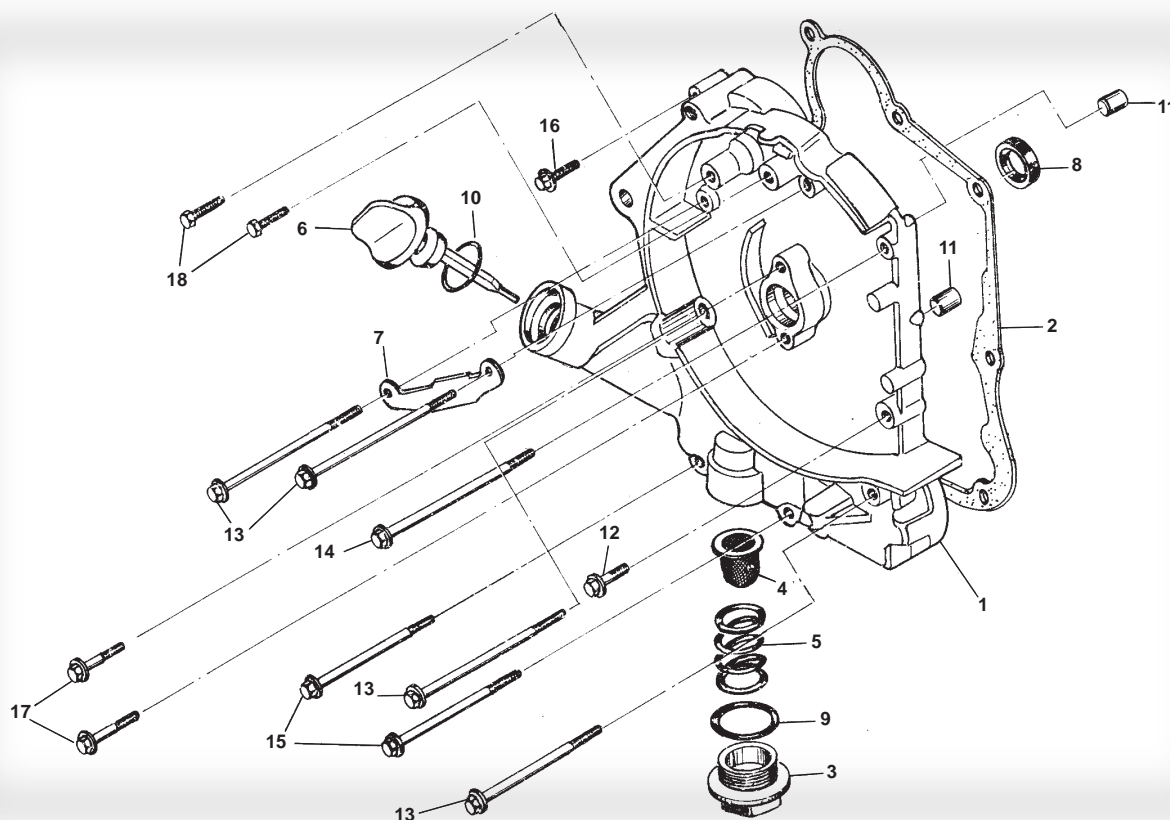


Fig. 3

CRANKCASE ASSY.(1)

REF NO.	PART NO.	DESCRIPTION	REQ. NO.
1	513-2015	COVER R CRANKCASE COMP.	1
2	513-1019	CRANKCASE COVER, GASKET	1
3	500-1015	CAP TAPPET ADJUSTING HOLE	1
4	513-1020	SCREEN OIL FILTERING	1
5	557-1003	SRING OIL FILTING SCREEN	1
6	513-1021	GAUGE OIL LEVEL	1
7	513-1083	CLAMP AC GENERATOR CORD	1
8	513-1022	OIL SEAL 19.8X30X5	1
9	513-1074	O-RING 30.8X3	1
10	513-1023	O-RING 18X3	1
11	500-1308	PIN DOWEL 8X14	2
12	500-1309	BOLT FLANGE M6X28	1
13	500-1310	BOLT FLANGE M6X95	4
14	500-1304	BOLT FLANGE M6X100	1
15	500-1311	BOLT FLANGE M6X110	2
16	500-1312	BOLT FLANGE M6X35	1
17	500-1313	BOLT FLANGE M6X20	2
18	500-1314	BOLT HEX M5X12-ZN.D	2

FIG.4

CRANKCASE ASSY. (2)

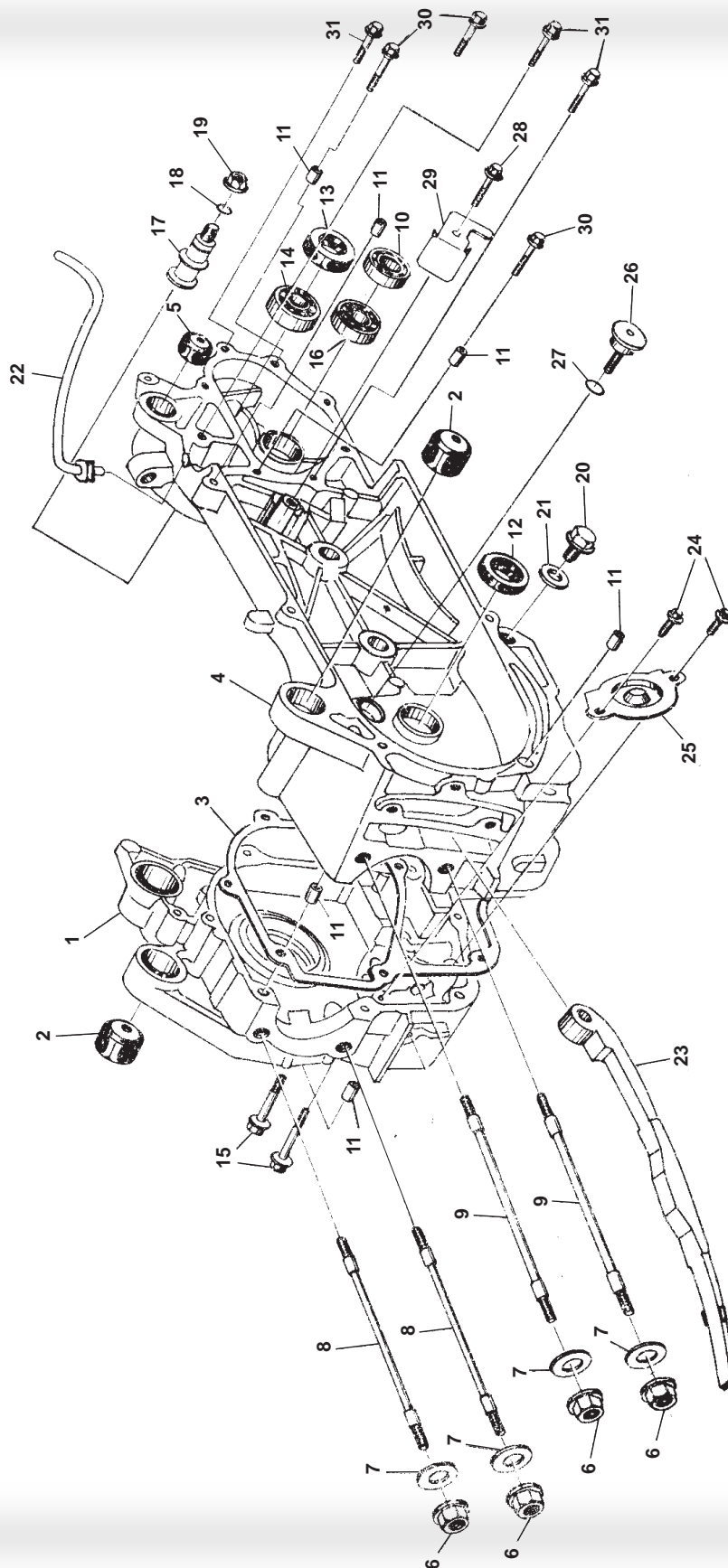
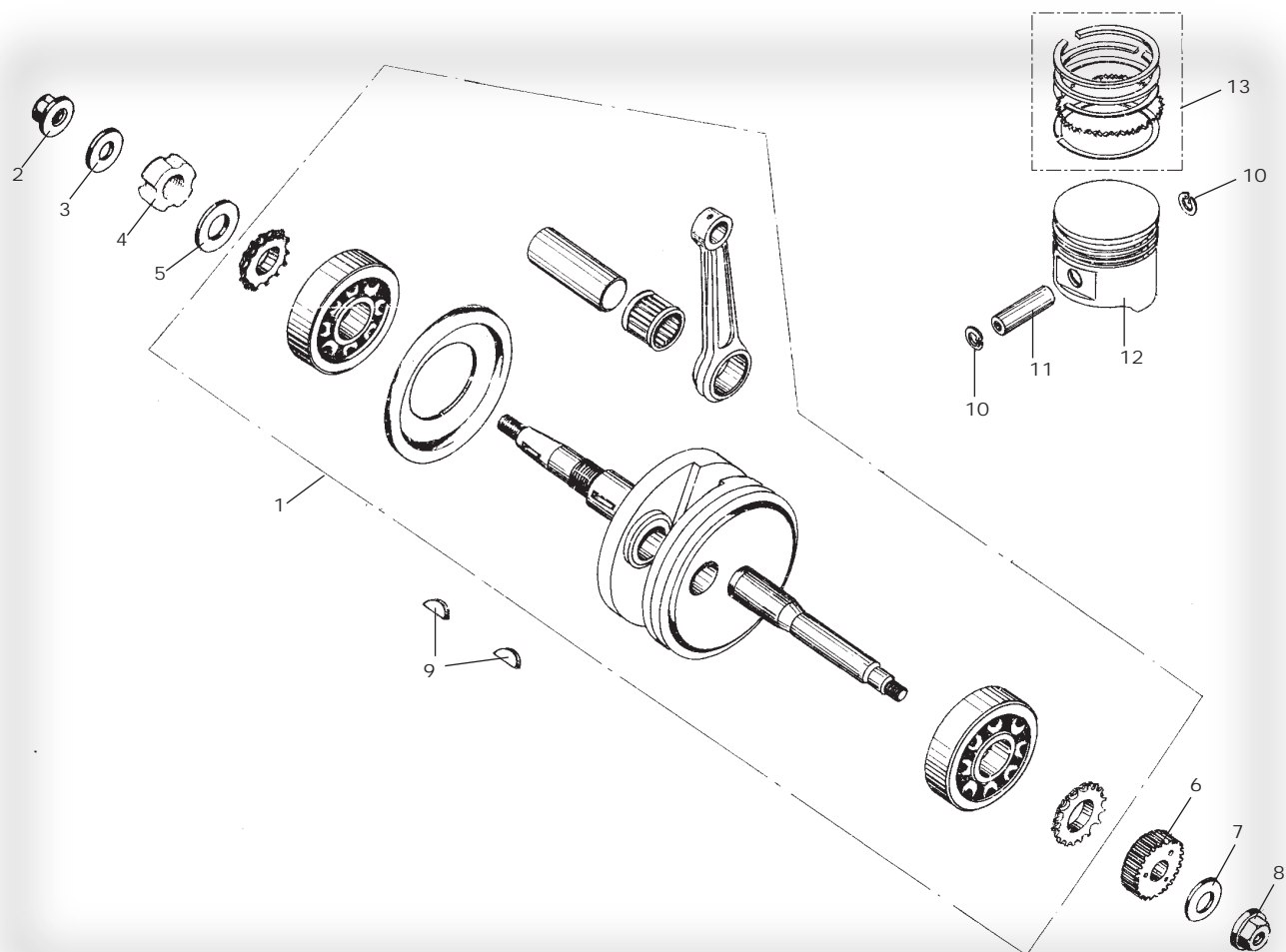


Fig. 4

CRANKCASE ASSY. (2)

REF NO.	PART NO.	DESCRIPTION	REQ. NO.
1	513-2013	CRANKCASE ASSY. R	1
2	513-1021	BUSH ENGINE HANGER RUBBER	2
3	513-1025	GASKET CRANKCASE	1
4	513-2007	CANKCASE ASSY. L	1
5	513-1026	BUSH RR CUSHION UNDER RUBBER	1
6	500-1004	NUT FLANGE M8	4
7	500-1052	WASHER Ø8	4
8	500-1053	BOLT STUD M8X187.5	2
9	500-1030	BOLT STUD M8X195.5	2
10	522-1301	BEARING RADIAL BALL E6002	1
11	500-1308	PIN DOWEL 8X14	6
12	513-1022	OIL SEAL 19.8X30X5	1
13	513-1028	OIL SEAL 27X42X7	1
14	522-3005	BEARING RADIAL BALL E6004-2RS	1
15	500-1054	BOLT FLANGE M6X50	2
16	522-3006	BEARING RADIAL BALL E6310	1
17	513-1029	PIN BRAKE SHOE ANCHOR	1
18	513-1030	OIL SEAL 7.5X15	1
19	500-1055	NUT FLANGE M8	1
20	500-1016	BOLT DRAIN PLUG M12	1
21	500-1005	WASHER DRAIN PLUG Ø12	1
22	513-1031	TUBE BREATHER	1
23	513-1032	TENSIONER CAM CHAIN	1
24	500-1009	BOLT FLANGE M6X12	2
25	513-1084	SEPARATOR OIL	1
26	513-1070	PIVOT CAM CHAIN TENSIONER	1
27	513-1033	OIL SEAL 15.2X12	1
28	500-1056	BOLT FLANGE M6X14	1
29	513-1085	PLATE KICK RETURN STOPPER	1
30	500-1057	BOLT FLANGE M6X35	3
31	500-1058	BOLT FLANGE M6X25	3

CRANKSHAFT CONROD & PISTON ASSY.



CRANKSHAFT CONROD & PISTON ASSY.			
REF NO.	PART NO.	DESCRIPTION	REQ. NO.
1	513-1034	CRANKSHAFT & CONROD ASSY.	1
2	500-1039	NUT M12X1.25	1
3	500-1038	WASHER 12-149HV 12-140HV	1
4	500-1023	NUT LOCK	1
5	500-1024	WASHER	1
6	513-1086	GEAR KICK DRIVE	1
7	500-1032	WASHER Ø12	1
8	500-1059	NUT M12	1
9	513-1068	KEY WOODRUFF	2
10	513-1035	CLIP PISTON PIN	2
11	513-1036	PIN PISTON	1
12	513-1037	PISTON	1
13	513-1038	PISTON RING SET	1

CAMSHAFT ASSY.

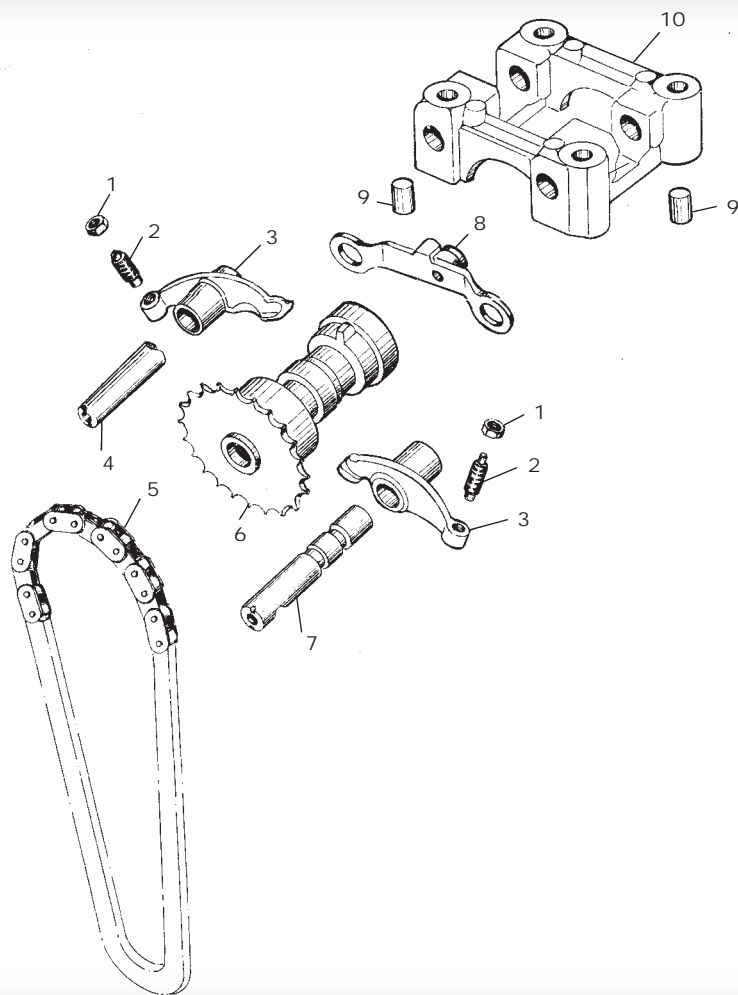


Fig. 6 CAMSHAFT ASSY.			
REF NO.	PART NO.	DESCRIPTION	REQ. NO.
1	500-1006	TAPPET ADJUSTING NUT	2
2	500-1007	SCREW TAPPET ADJUSTING	2
3	513-2004	ARM VALVE ROCKER	2
4	513-1027	SHAFT EX ROCKER ARM	1
5	513-1039	CHAIN CAMSHAFT	1
6	513-1073	CAMSHAFT COMP. 16T	1
7	513-1072	SHAFT COMP. IN ROCK ARM	1
8	513-2008	PLATE COMP. STOPPER	1
9	500-1002	PIN DOWEL 10X16	2
10	513-1067	HOLDER CAMSHAFT	1

LEFT COVER ASSY.

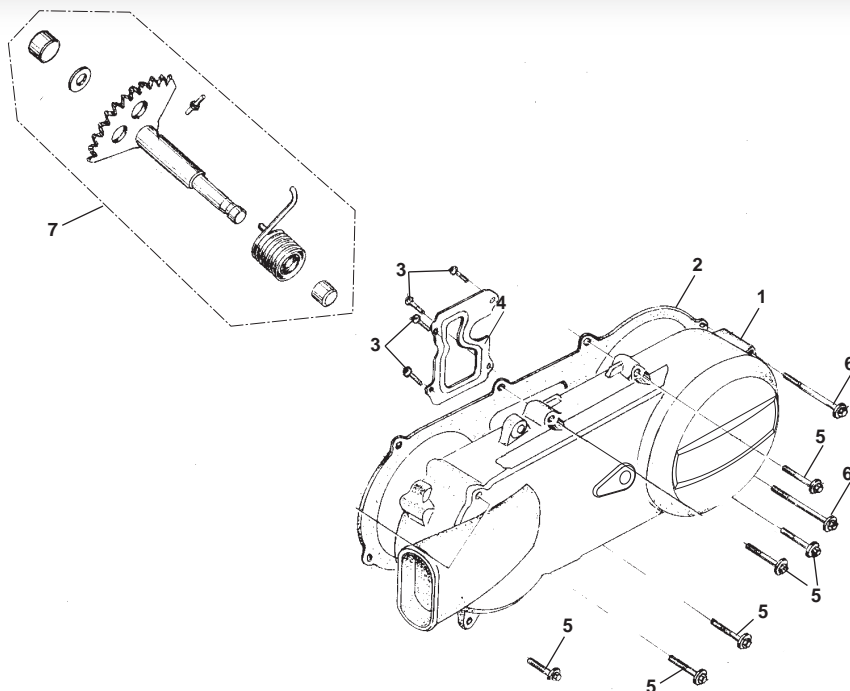


Fig. 7 LEFT COVER ASSY.			
REF NO.	PART NO.	DESCRIPTION	REQ. NO.
1	540-1006	COVER L	1
2	513-1040	GASKET L COVER	1
3	500-1060	SCREW TAPPING ST4.2X8-F-H	4
4	513-2009	PLATE L COVER	1
5	500-1312	BOLT FLANGE M6X40	6
6	500-1061	BOLT FLANGE M6X65	2
7	513-1042	SPINDLE COMP. KICK STARTER ASSY.	1

FAN COVER AND SHROUD ASSY.

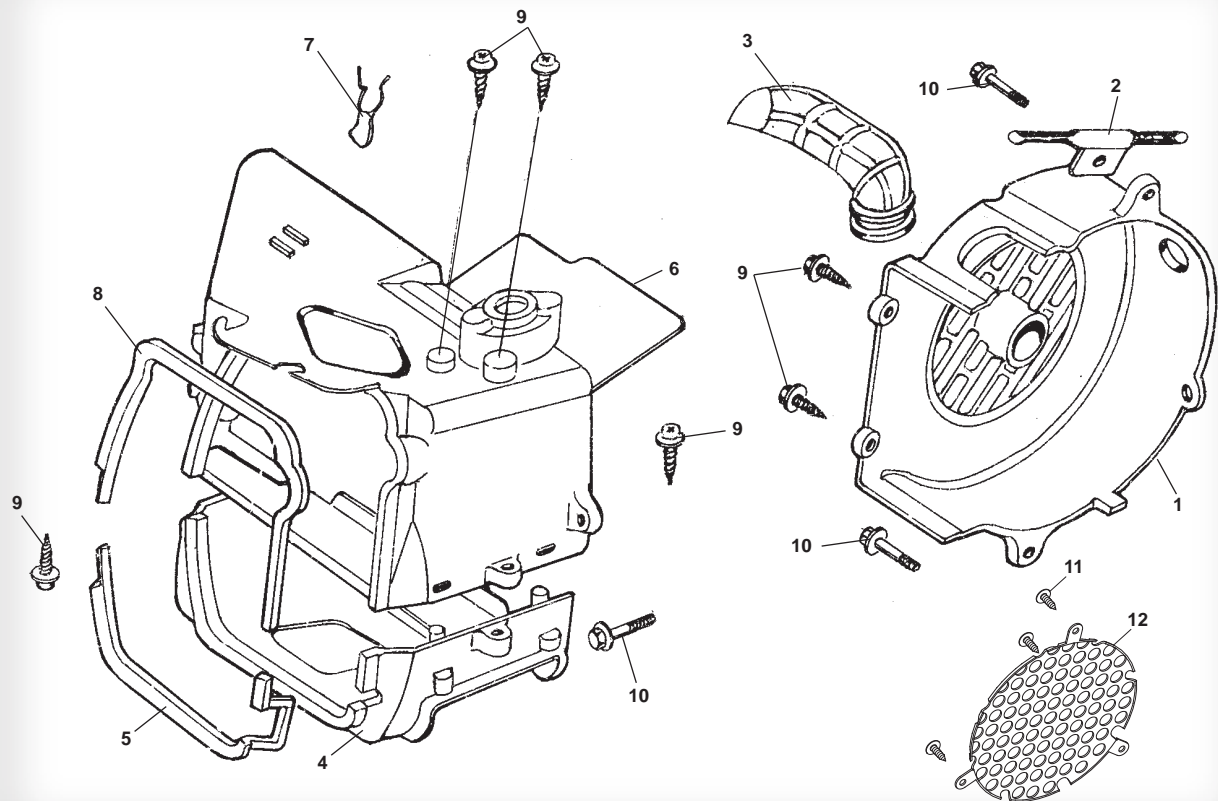


Fig. 8 FAN COVER AND SHROUD ASSY.

REF NO.	PART NO.	DESCRIPTION	REQ. NO.
1	513-1043	COVER COMP. FAN	1
2	513-2010	CLAMPER STARTER CABLE	1
3	513-2011	DUCT CARBURETOR COOLING	1
4	513-3014	SHROUD LOWER	1
5	513-1078	SEAL SHROUD LOWER	1
6	513-3015	SHROUD COMP. UPPER	1
7	513-3022	CLIP HIGH TENSION CORD	1
8	513-1079	SEAL SHROUD UPPER	1
9	500-1062	SCREW ST4.8X16-F	6
10	500-1063	BOLT M6X25	3
11	500-0401	SCREW ST3.5x13-F	3
12	513-3048	DUST COVER	1

OIL PUMP ASSY.

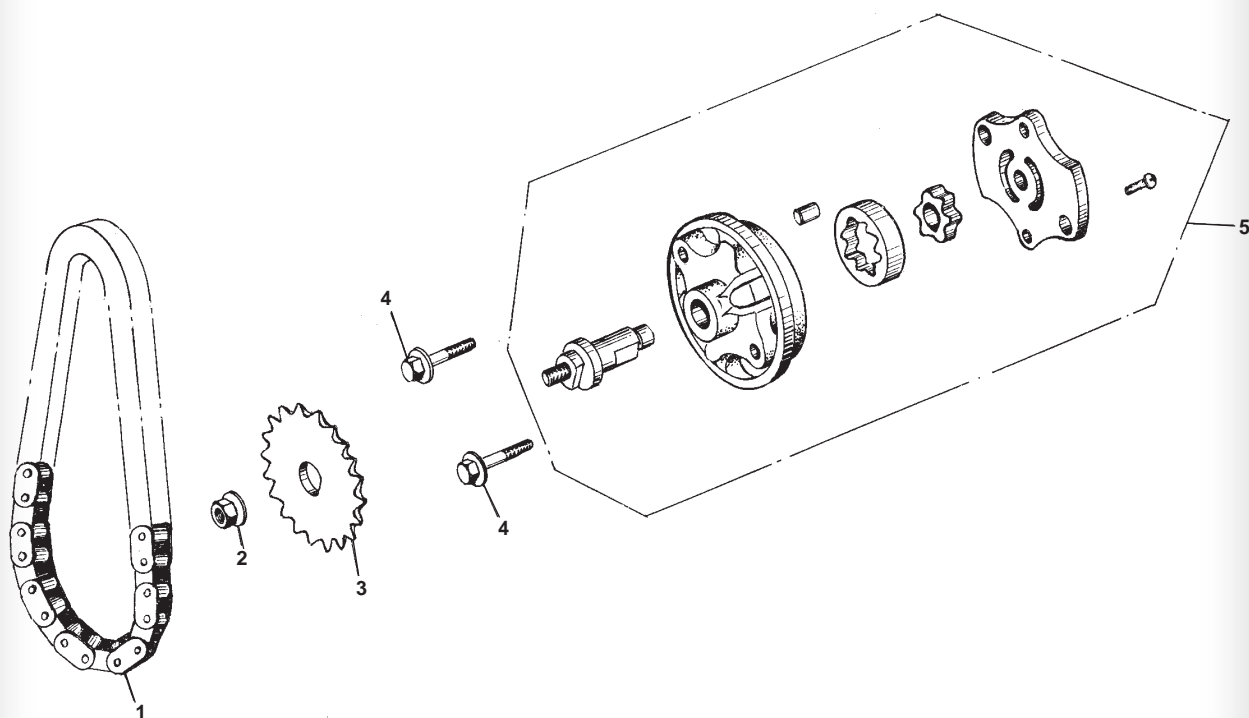


Fig. 9 OIL PUMP ASSY.			
REF NO.	PART NO.	DESCRIPTION	REQ. NO.
1	513-1044	CHAIN OIL PUMP	1
2	500-1064	NUT FLANGE M6	1
3	513-2012	SPROCKET OIL PUMP DRIVEN	1
4	500-1063	BOLT M6X25	2
5	513-1045	OIL PUMP SUB ASSY.	1

DRIVEN PULLEY AND CLUTCH SUBASSY.

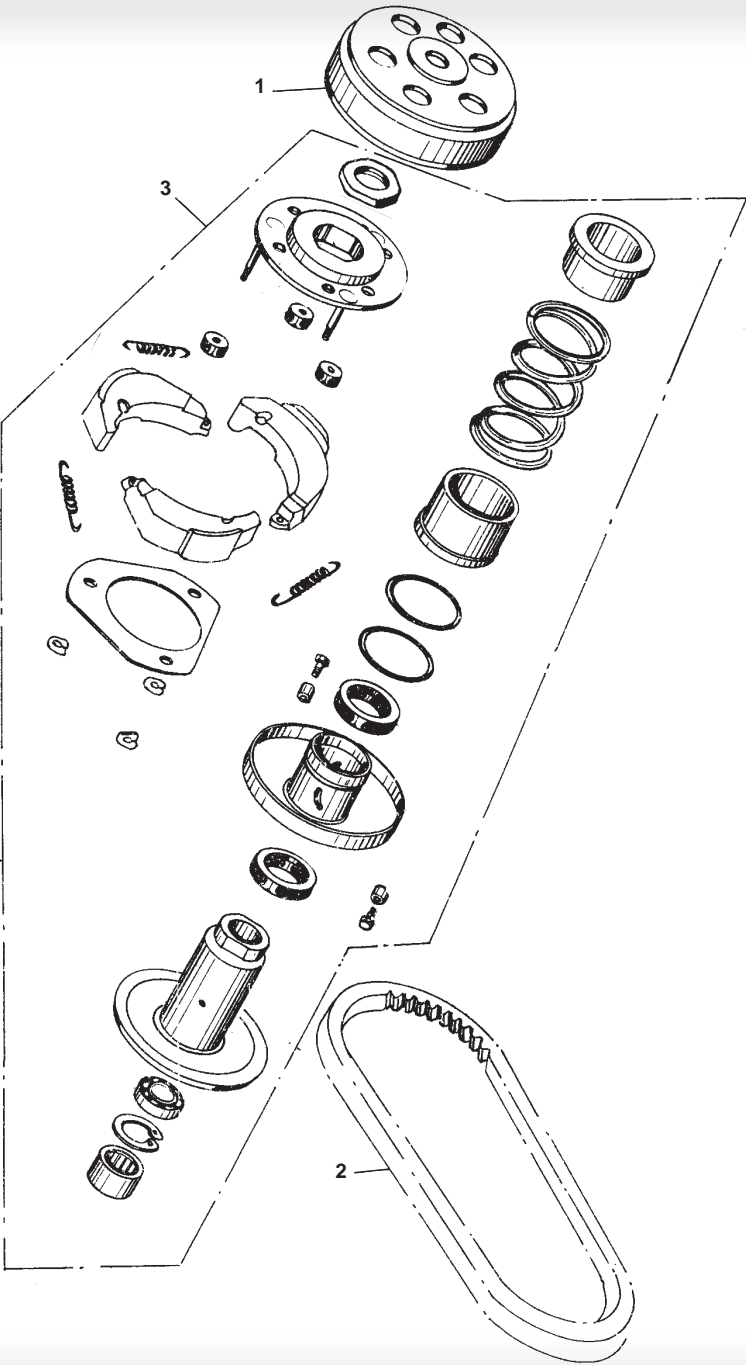


Fig. 10 DRIVEN PULLEY AND CLUTCH SUBASSY.			
REF NO.	PART NO.	DESCRIPTION	REQ. NO.
1	539-1004	OUTER CLUTCH ASSY.	1
2	513-1046	BELT DRIVE	1
3	513-1047	PULLEY ASSY. DRIVEN	1

TRANSMISSION ASSY.

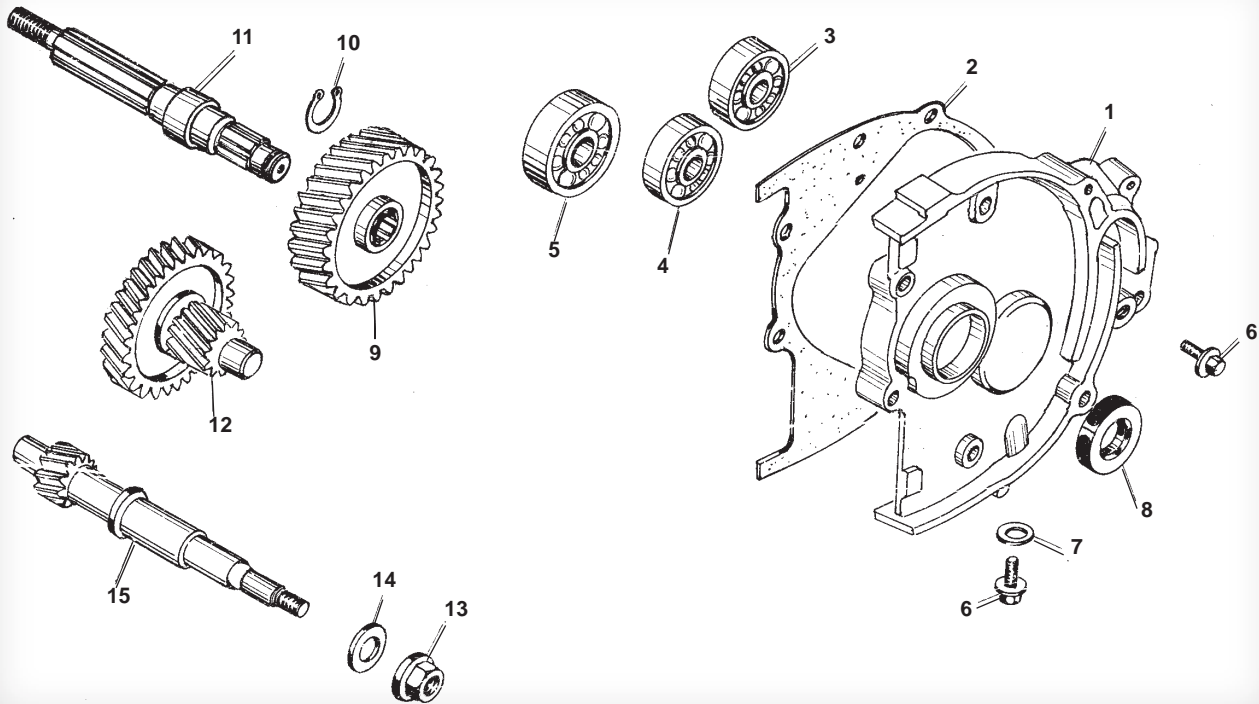


Fig. 11		TRANSMISSION ASSY.	
REF NO.	PART NO.	DESCRIPTION	REQ. NO.
1	513-1048	COVER TRANSMISSION	1
2	513-1049	GASKET TRANSMISSION COVER	1
3	513-2200	BEARING RADIAL BALL E6203	1
4	513-2201	BEARING RADIAL BALL E6202	1
5	513-2202	BEARING RADIAL BALL E6204	1
6	500-1025	BOLT SPECIAL M8X12	2
7	500-1010	WASHER Ø8	1
8	513-1050	OIL SEAL 20X32X6	1
9	513-1087	GEAR FINAL - 40 TEETH	1
9A	513-2831	GEAR FINAL - 36 TEETH	1
10	500-1011	CIRCLIP EXTERNAL 20	1
11	513-1051	SHAFT FINAL	1
12A	513-3023	SHAFT COMP. COUNTER - 17 TEETH	1
12	513-2832	SHAFT COMP. COUNTER - 13 TEETH	1
13	513-1088	NUT COMPRESSOR FLANGE M12	1
14	500-1032	WASHER Ø12	1
15	513-1052	SHAFT DRIVE	1

TALON TRANSMISSIONS HAVE TWO DIFFERENT GEAR SETS.
PLEASE COUNT THE TEETH OR CALL THE PARTS DEPARTMENT.

ELECTRIC SYSTEM

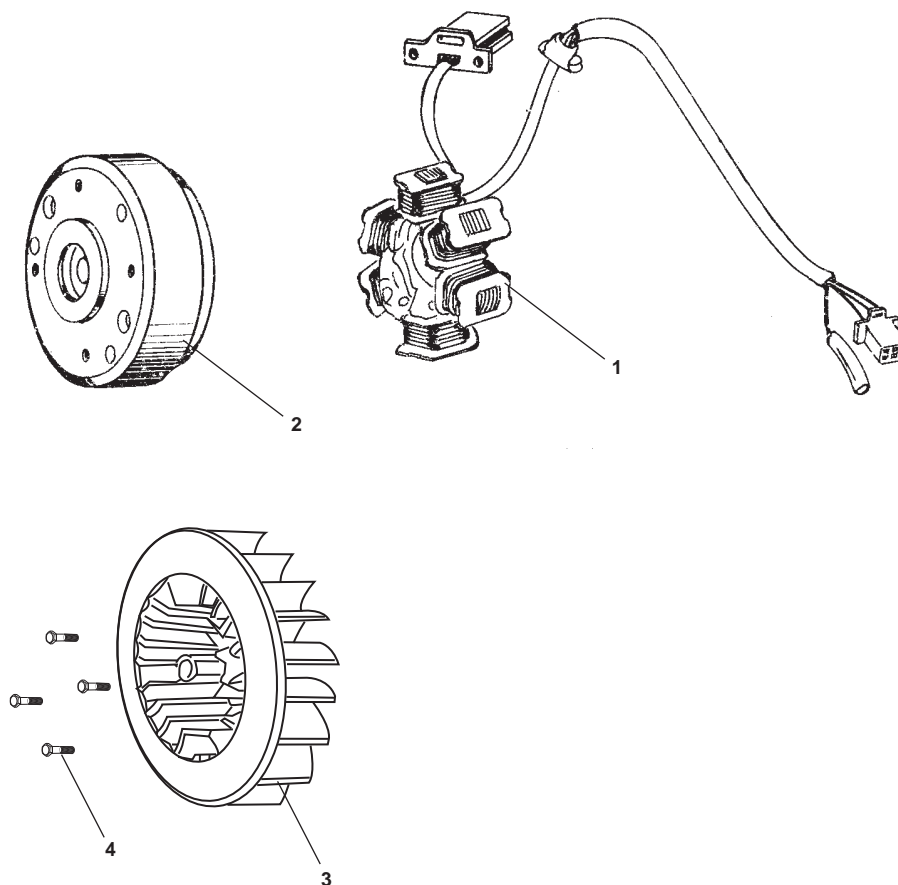


Fig. 12		ELECTRIC SYSTEM	
REF NO.	PART NO.	DESCRIPTION	REQ. NO.
1	513-2005	STATOR COMP. - 8 POST	1
1	513-1053	STATOR COMP - 6 POST	1
2	513-1054	FLYWHEEL COMP. - 8 POST	1
2	513-1154	FLYWHEEL COMP. - 6 POST	1
3	513-1055	FAN COMP COOLING	1
4	500-1065	BOLT FLANGE M6x18	4

TALON ENGINES USE TWO DIFFERENT STATORS & FLYWHEELS.
REMEMBER TO COUNT THE NUMBER OF POSTS BEFORE ORDERING!

ELECTRIC STARTER ASSY.

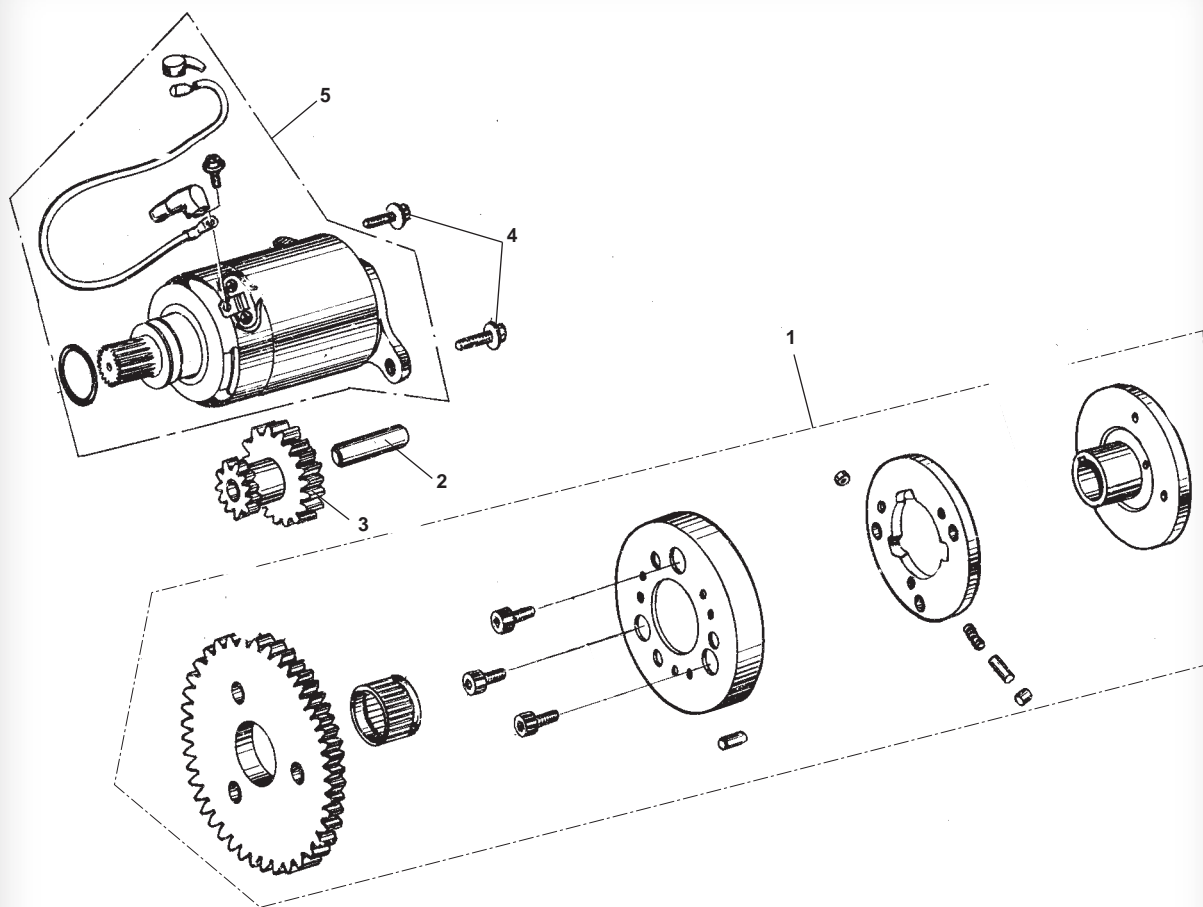


Fig. 13		ELECTRIC STARTER ASSY.	
REF NO.	PART NO.	DESCRIPTION	REQ. NO.
1	513-1089	FLANGE STARTING CLUTCH	1
2	513-1090	SHAFT STARTER REDUCTION GEAR	1
3	513-1058	GEAR STARTER REDUCTION	1
4	500-5302	BOLT FLANGE M6X16	2
5	513-1059	MOTOR ASSY. STARTER	1

DRIVE PULLEY SUBASSY.

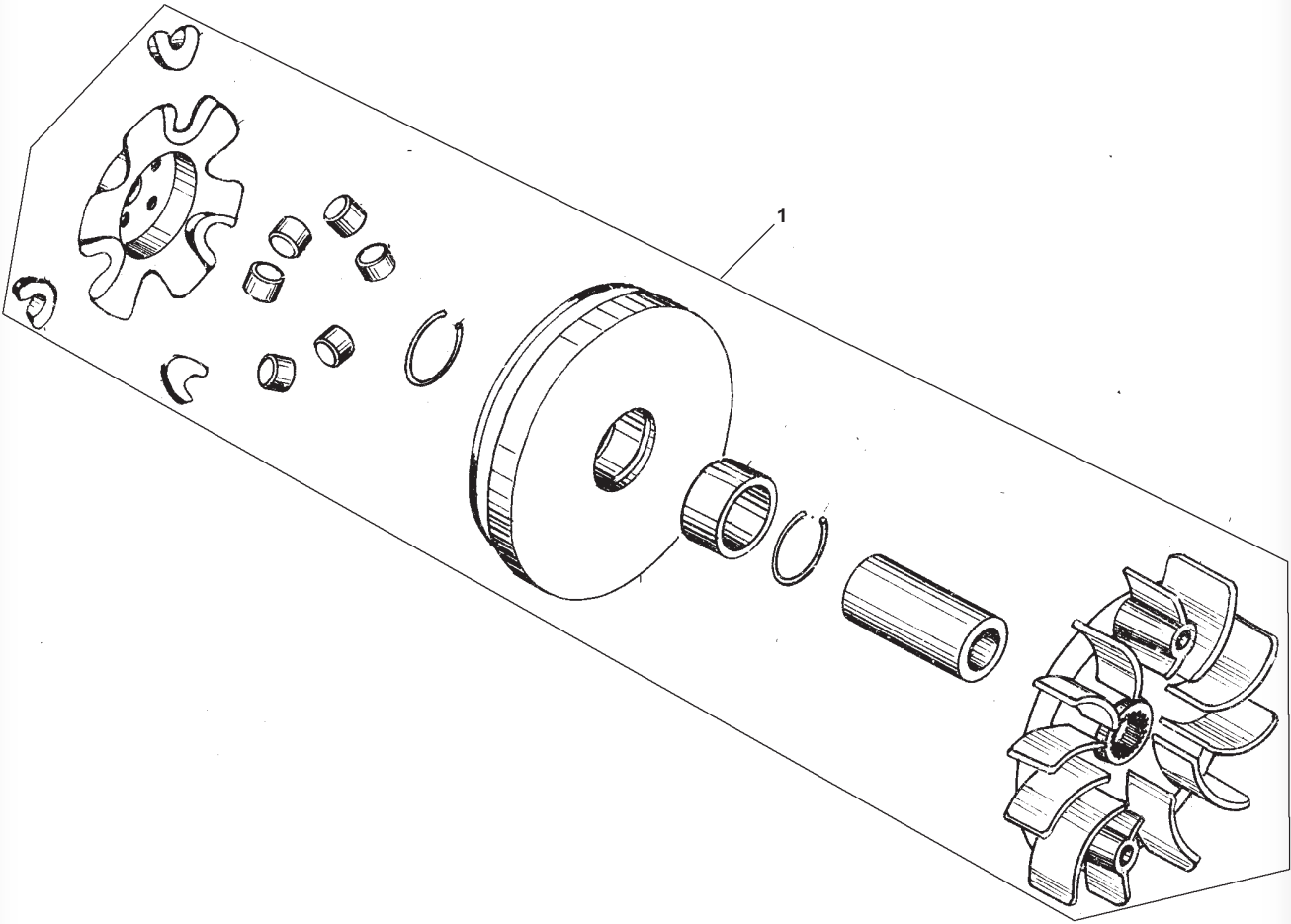


Fig. 14		DRIVE PULLEY SUBASSY.	
REF NO.	PART NO.	DESCRIPTION	REQ. NO.
1	513-1060	PULLEY ASSY MOVABLE DRIVE	1

FIG.15

CARBURETOR

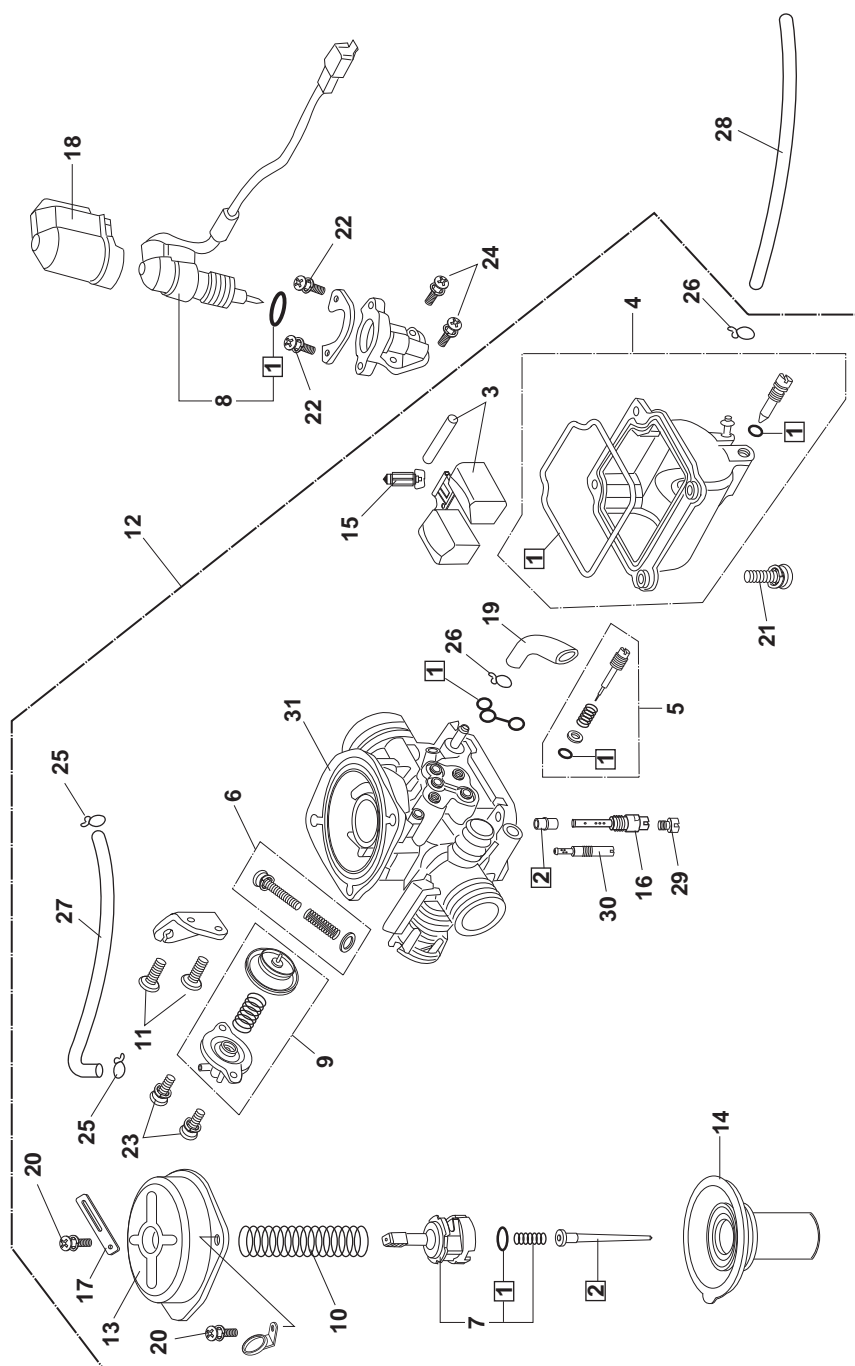
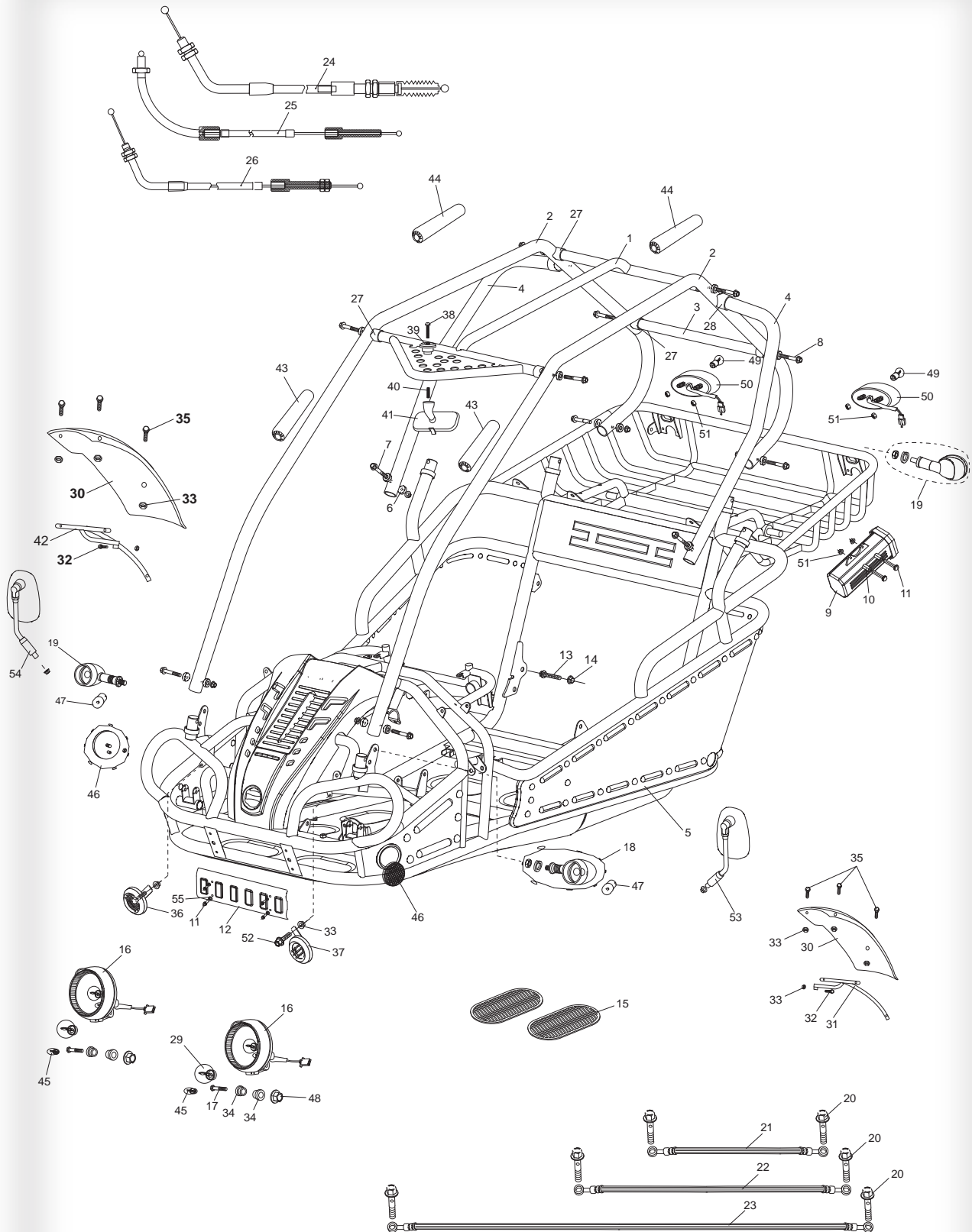


Fig. 15		CARBURETOR	
REF NO.	PART NO.	DESCRIPTION	REQ. NO.
1	513-1061	GASKET SET A	1
2	513-1062	NEEDLE SET. JET	1
3	513-1091	FLOAT SET	1
4	513-1092	CHAMBER SET. FLOAT	1
5	500-1012	SCREW SET A	1
6	500-1013	SCREW SET B	1
7	513-1063	PLATE SET. VALVE	1
8	513-1064	BYSTARTER ASSY., AUTO	1
9	513-1065	VALVE SET. AIR CUT	1
10	513-1093	SPRING. COMPRESSION COIL	1
11	500-1066	SCREW. PAN M5x12	1
12	513-1066	CARBURETOR ASSY.	2
13	513-1094	TOP	1
14	513-2003	PISTON COMP., VACUUM***	1
15	513-1069	VALVE COMP. FLOAT	1
16	513-1095	HOLDER. NEEDLE JET	1
17	513-1096	BINDER	1
18	513-1097	CAP. HOLDER	1
19	513-1098	TUBE	1
20	500-1172	SCREW, PAN, M4x8	1
21	500-1179	SCREW, PAN, M4x14	2
22	500-1169	SCREW-WASHER, M4x8	4
23	500-1168	SCREW-WASHER, M4x10	2
24	500-1170	SCREW-WASHER, M5x12	2
25	500-1099	CLIP, TUBE (B7)	2
26	500-1098	CLIP, TUBE (B8)	2
27	513-1099	TUBE, 3.5x210	2
28	513-1100	TUBE	1
29	513-1101	JET, MAIN 112#	1
30	513-1102	JET, SLOW 35#	1
31	513-1103	CARBURETOR BODY	1

*** TALON KARTS HAVE USED THREE DIFFERENT CARBURATORS. BEFORE ORDERING, CALL WITH KART SPECS TO GET THE CORRECT PART.

FIG.16

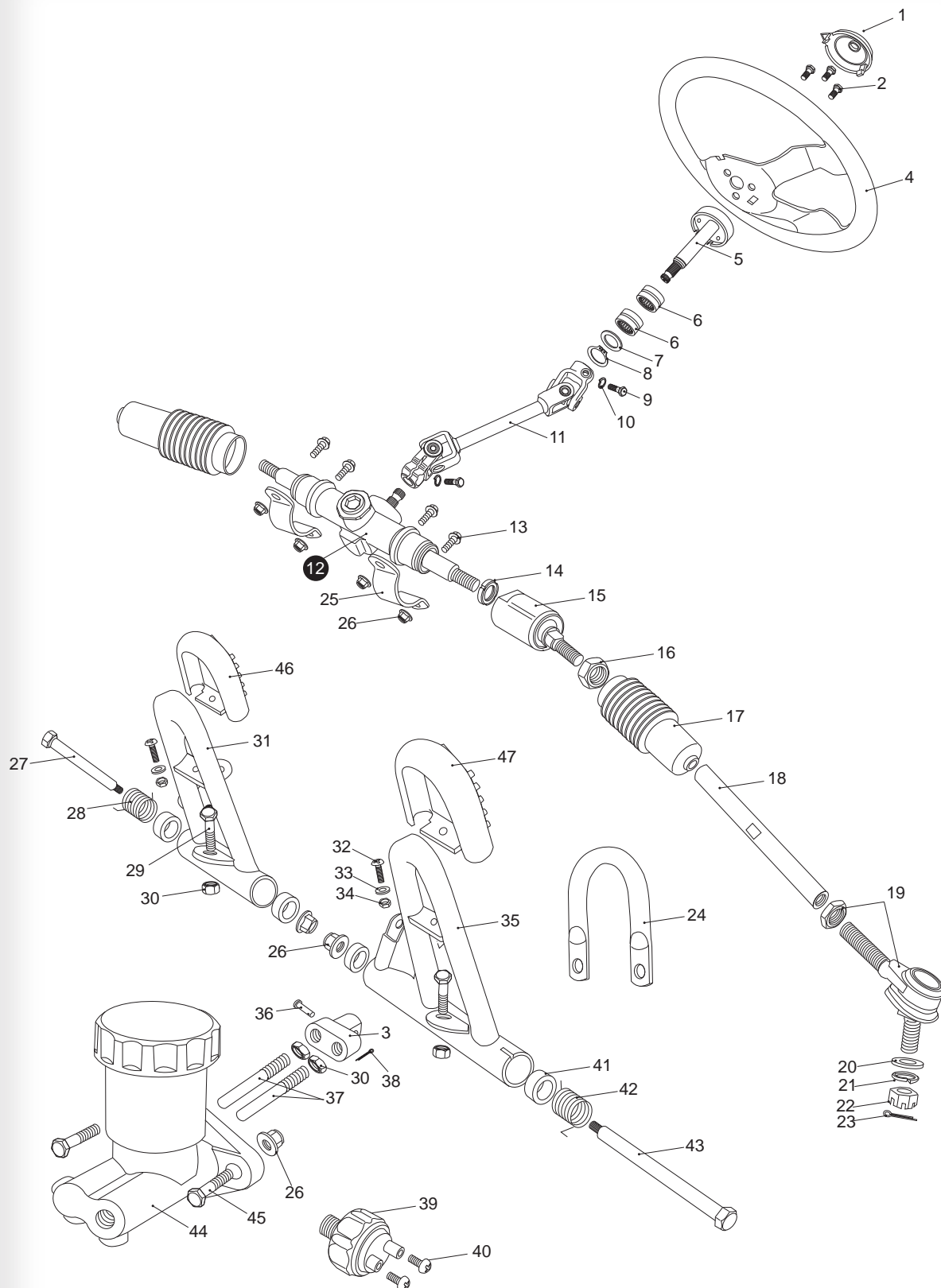
FRAME GROUP



FRAME GROUP

REF NO.	PART NO.	DESCRIPTION	REQ NO.
1, 1a, 1b	512-1103 blue, 512-1603 carbon, 512-1503 silver	C.B.C. CROSS BAR, FR (B.R.S.)	1
2, 2a, 2b	512-1100 blue, 512-1600 carbon, 512-1500 silver	C.B.C. BAR CAGE (B.R.S.)	2
3, 3a, 3b	512-1100 blue, 512-1600 carbon, 512-1500 silver	C.B.C. CROSS BAR, RR (B.R.S.)	1
4, 4a, 4b	512-1114 blue, 512-1514 carbon, 512-1614 silver	C.B.C. BAR, L./R. SIDE (B.R.S.)	2
5, 5a, 5b	550-0128 blue, 550-0628 carbon, 550-0528 silver	FRAME COMP. (B.R.S.)	1
6	500-3024	WASHER	18
7	500-1109	SOCKET BOLT M8 x 1.25 x 50	6
8	500-1051	SOCKET BOLT M8 x 1.25 x 55	10
9	540-2805	TOOL BOX	1
10	540-2806	TOOL COLLAR	2
11	500-1112	FLANGE BOLT M6X16	4
12	537-2802	FRONT PLATE	1
13	500-1050	BOLT-WASHER M12 x 1.25 x 25	2
14	500-3006	LOCKING FLANGE NUT M12	2
15	540-1000	RUBBER FOOT PLATE	2
16	509-3000	HEADLIGHT UNIT	2
17	500-3044	BOLT-WASHER M8 x 1.25 x 50	2
18	509-3038	TURN SIGNAL ASSY. L. FR./R.RR.	2
19	509-3037	TURN SIGNAL ASSY. R. FR./L.RR.	2
20	500-1014	BANJO BOLT M10x24	6
21	552-3000	BRAKE HOSE ASSY. L. 34"	1
22	552-3001	BRAKE HOSE ASSY. R. 43"	1
23	552-3002	BRAKE HOSE ASSY. RR. 75"	1
24	558-1000	THROTTLE CABLE COMP.	1
25	539-1000	REVERSE CABLE COMP.	1
26	552-1000	PARKING BRAKE CABLE COMP.	1
27	512-1009	CUSTOM BAR CAGE CAP	6
28	534-1002	TUBE SEAT ϕ 32	2
29	509-3014	HEADLIGHT BULB 35W/35W/ 12V	2
30	537-3000	FENDER, FR.	2
31	537-3001	FRONT FENDER BRACKET, L.	1
32	500-3032	BOLT M6 x 40	2
33	500-3019	LOCKING FLANGE NUT M6	10
34	509-1018	HEADLIGHT RUBBER MOUNT	4
35	500-1175	BOLT-WASHER M6 x 14	6
36	509-3044	HORN, H.	1
37	509-3045	HORN, L.	1
38	500-3000	BOLT M5 x 25	1
39	540-3000	REAR MIRROR MOUNT	1
40	557-3000	REAR VIEW MIRROR SPRING	1
41	540-3001	REAR MIRROR ASSY.	1
42	537-3010	FRONT FENDER BRACKET, R.	1
43	540-3002	FOAM PADDING-1	2
44	540-1009	FOAM PADDING-2	2
45	509-3046	POSITION LIGHT BULB 3W 12V	2
46	540-3007	FRONT REFLECTOR	2
47	509-3047	WINKER BULB 10W 12V	4
48	500-1043	NUT M8	4
49	509-3021	TAIL LIGHT BULB 21W/5W 12V	2
50	509-3006	TAIL LIGHT	2
51	500-3019	LOCK NYLON NUT M6	8
52	500-1084	BOLT M6 x 12	2
53	540-3009	LEFT MIRROR	1
54	540-3010	RIGHT MIRROR	1
55	500-1086	LOCK WASHER 6	2
56	500-3045	BOLT M8X1.25X55	2
57	500-1043	LOCK NUT M8	2
58	500-3024	C.B.C. CAP WASHER M8	2

STEERING SHAFT ASSY.



STEERING SHAFT ASSY.			
REF NO.	PART NO.	DESCRIPTION	REQ NO.
1	536-3026	STEERING BOLT COVER	1
2	500-1084	BOLT STRAP M6x12	3
3	540-3012	SPINDLE BRACKET	1
4	536-3072	STEERING WHEEL	1
5	536-3028	STEERING SHAFT	1
6	522-3012	BEARING NK20/16	2
7	500-3001	SPECIAL WASHER $\Phi 20$	1
8	500-1067	CIRCLIP $\Phi 20$	1
9	500-1068	BOLT M8x25	2
10	500-1069	LOCKING WASHER $\Phi 8$	2
11	536-3004	STEERING KNUCKLE	1
12	536-3029	STEERING GEAR	1
13	500-1070	BOLT-WASHER M8x1.25x25	4
14	500-1018	ROUND NUT M16x1.5	2
15	536-3006	STEERING BALL JOINT	2
16	500-3003	NUT M10	2
17	536-3007	BALL JOINT DUST COVER. L.	2
18	536-3008	TIE ROD	2
19	536-3009	ROD END	2
20	500-3025	FLAT WASHER $\Phi 10$	2
21	500-1071	LOCKING WASHER $\Phi 10$	2
22	500-3004	CASTLE NUT M10	2
23	500-1072	COTTER PIN $\Phi 2 \times 15$	2
24	552-3016	MASTER CYLINDER BRACKET	2
25	536-1007	STEERING GEAR BRACKET	2
26	500-1043	LOCKING FLANGE NUT. M8	8
27	500-1028	THROTTLE PEDAL BOLT M8x1.25x145	1
28	557-3001	THROTTLE PEDAL RETURN SPRING, L	1
29	500-1026	BOLT-WASHER M8x1.25x40	2
30	500-1073	NUT M8	2
31	558-3000	THROTTLE PEDAL COMP.	1
32	500-1074	PAN SCREW M5x15	2
33	500-1075	FLAT WASHER $\Phi 5$	2
34	500-1076	NYLON LOCK NUT M5	2
35	552-3003	BRAKE PEDAL COMP	1
36	500-1042	PIN 6x24	1
37	536-3023	SPINDLE PIN	2
38	500-1003	COTTER PIN 2X12	1
39	509-3005	BRAKE LAMP SWITCH ASSY.	1
40	500-1078	PAN SCREW M3x6	2
41	552-3004	PEDAL BUSH	4
42	557-3002	BRAKE PEDAL RETURN SPRING, R	1
43	500-2900	BRAKE PEDAL BOLT M8x1.25x222	1
44	552-3005	MASTER CYLINDER	1
45	500-1079	FLANGE BOLT M8x1.25x35	2
46	558-3036	THROTTLE PEDAL PAD	1
47	552-3037	BRAKER PEDAL PAD	1
48	536-3026	STEERING WHEEL LOCK	1

FIG.18

SUSPENSION ARM ASSY.

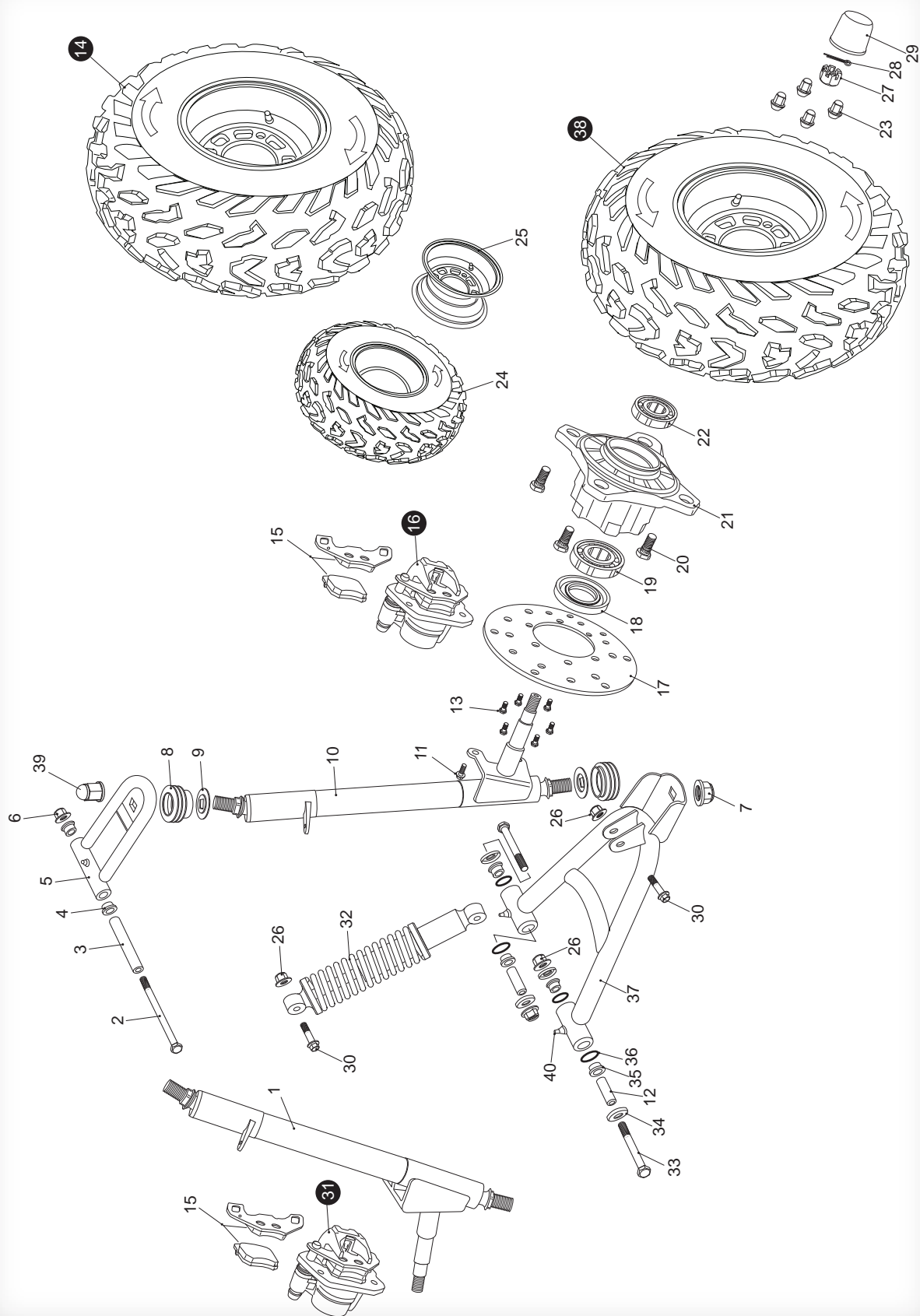


Fig. 18 SUSPENSION ARM ASSY.			
REF NO.	PART NO.	DESCRIPTION	REQ NO.
1	536-1003	STRUT AND SPINDLE SUPPORT, R	1
2	500-1081	BOLT-WASHER M8x1.25x105	2
3	536-3013	UPPER SUSPENSION ARM COLLAR	2
4	536-3014	UPPER SUSPENSION ARM BUSH	4
5, 5a, 5b	536-3015 blk, 536-2841 slv, 536-2861 cbn	UPPER SUSPENSION ARM	2
6	500-1043	LOCKING FLANGE NUT. M8	2
7	500-3006	LOCKING FLANGE NUT. M12	4
8	536-3016	BALL HEAD DUST SEAL	4
9	528-3000	BALL HEAD SPACER	4
10	536-1004	STRUT AND SPINDLE SUPPORT, L	1
11	500-1082	BOLT STRAP M8x14	4
12	500-1036	LOWER SUSPENSION ARM COLLAR	4
13	500-3005	BOLT STRAP M6x12	12
14	518-3018	FR. WHEEL ASSY. R 19x7-8	1
15	552-3007	FR. BRAKE CALIPER PAD SET	2
16	552-3008	FR BRAKE CALIPER. L	1
17	552-3009	FR. BRAKE DISC	2
18	552-3015	DUST SEAL 47x25-7	2
19	522-3000	BEARING 6204-Z	2
20	500-1019	TIRE BOLT M10x1.25x31	8
21	520-3006	FR. WHEEL HUB	2
22	522-3001	BEARING 6203-2Z	2
23	500-1087	FLANGE LOCK NUT M10	8
24	513-3000	TIRE. FR 20x7-8 = GSR	2
25	519-3006	RIM. FR = GSR	2
26	500-3014	LOCKING FLANGE NUT M10	16
27	500-1088	CASTLE NUT M12	2
28	500-1090	COTTER PIN Φ 2x20	2
29	520-3004	FR. HUB COVER.	2
30	500-1091	BOLT-WASHER M10x1.25x40	4
31	552-3011	FRONT BRAKE CALIPER. R	1
32	535-3000	CUSHION ASSY. FR L=325	2
33	500-3028	BOLT-WASHER M10x1.25x80	4
34	500-5300	LOWER SUSPENSION ARM DUST CAP	8
35	500-1020	LOWER SUSPENSION ARM BUSH	8
36	513-3019	O-RING Φ 21.2x2.65	8
37, 37a	521-2842 silver, 521-2862 carbon	LOWER SUSPENSION ARM ASSY.	2
38	518-3017	FR. WHEEL ASSY. L 20x7-8 = GSR	1
39	500-3006	LOCK NUT M12	2
39.1	500-1003	COTTER PIN	2
40	400-1107	GREASE FITTING	6
41.1, 41.2, 41.3	536-1000 bl, 521-2801 cbn, 521-2803 sil	STRUT & SPINDLE SUPPT. R. (CANADA)	1
42.1, 42.2, 42.3	536-1001 bl, 521-2802 cbn, 521-2804 sil	STRUT & SPINDLE SUPPT. L. (CANADA)	1

FIG.19

GAS TANK/SEAT/BELT

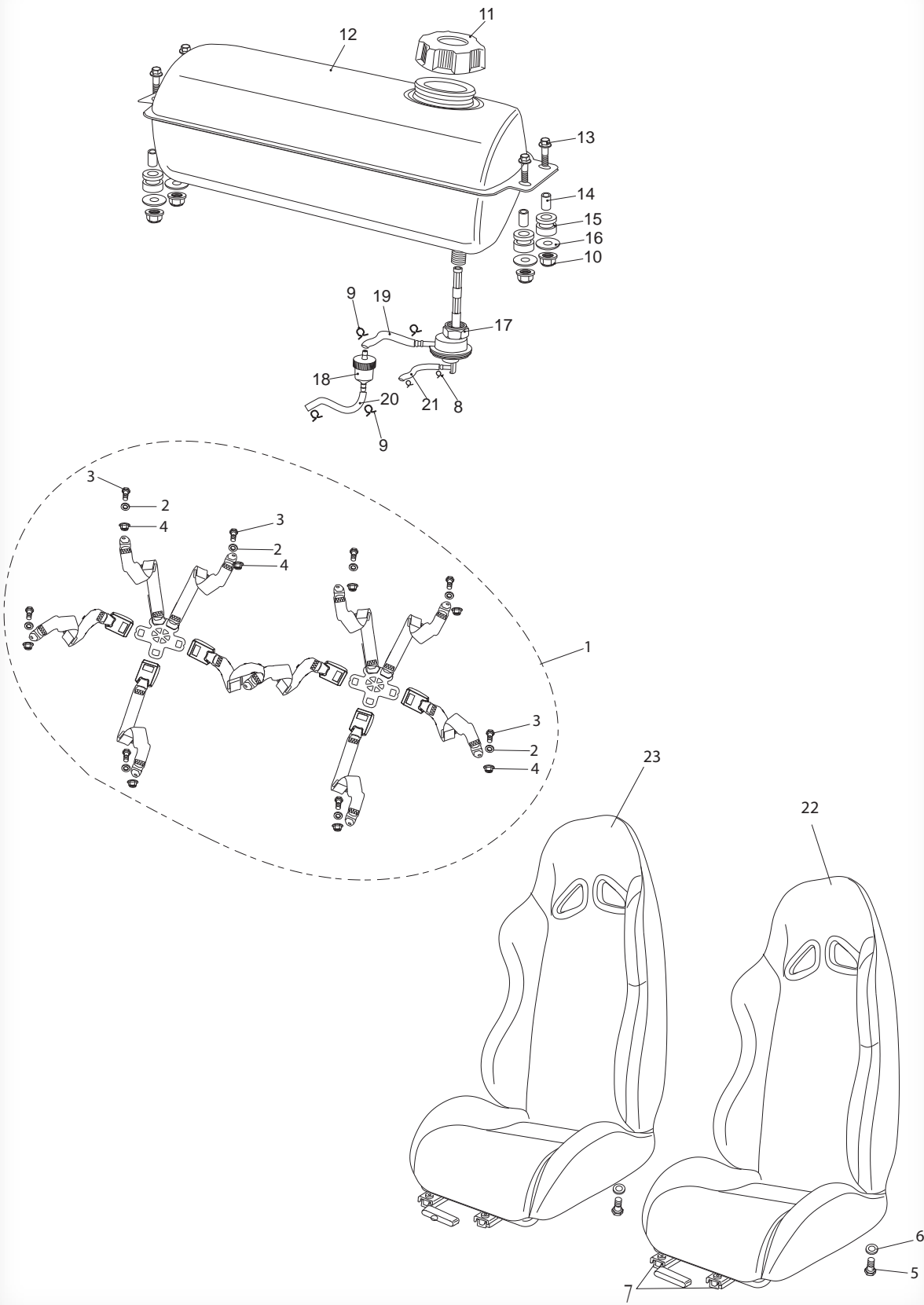


Fig. 19

GAS TANK/SEAT/BELT

[illegible]

FIG.20

REAR SWING ARM ASSY. UPPER

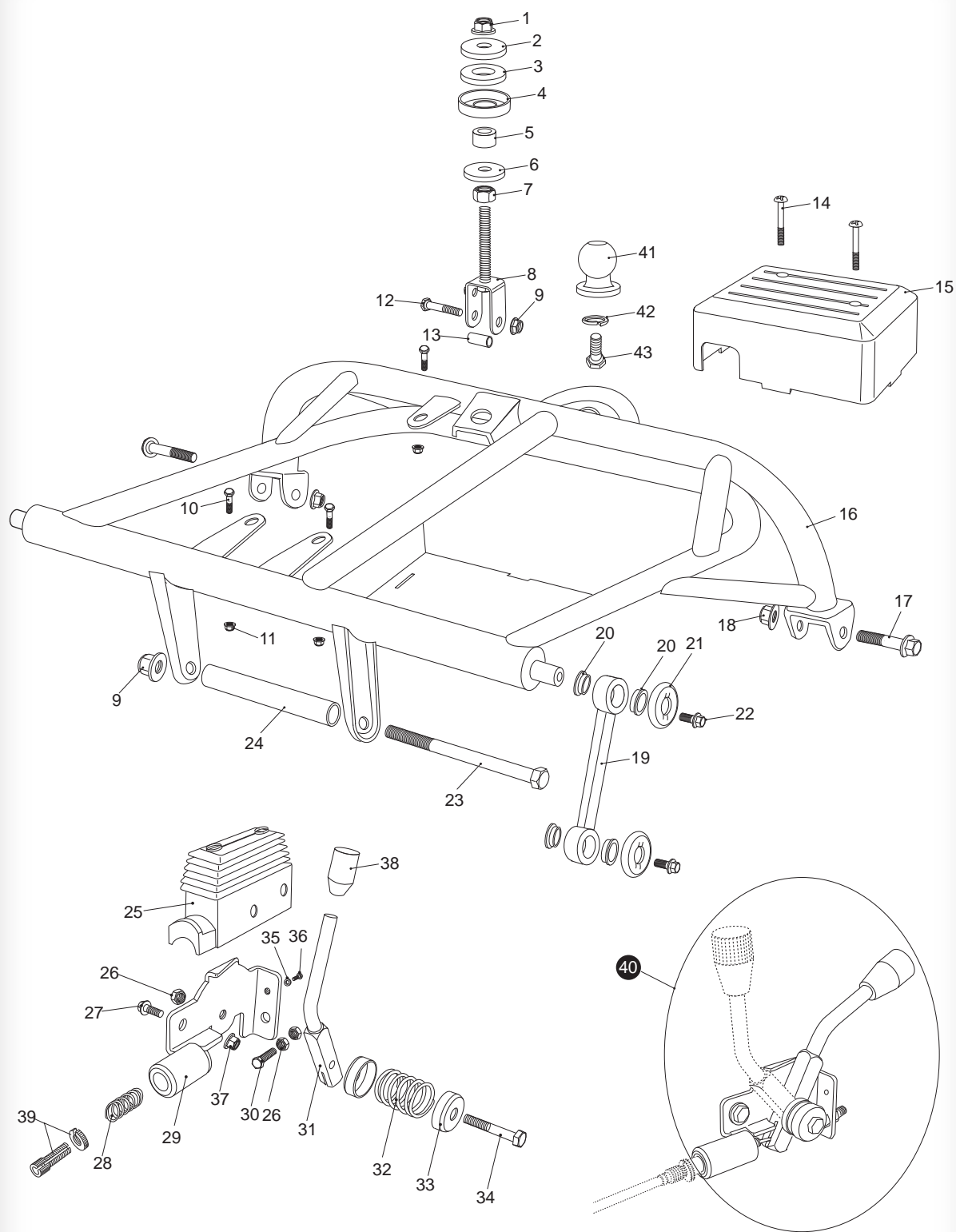
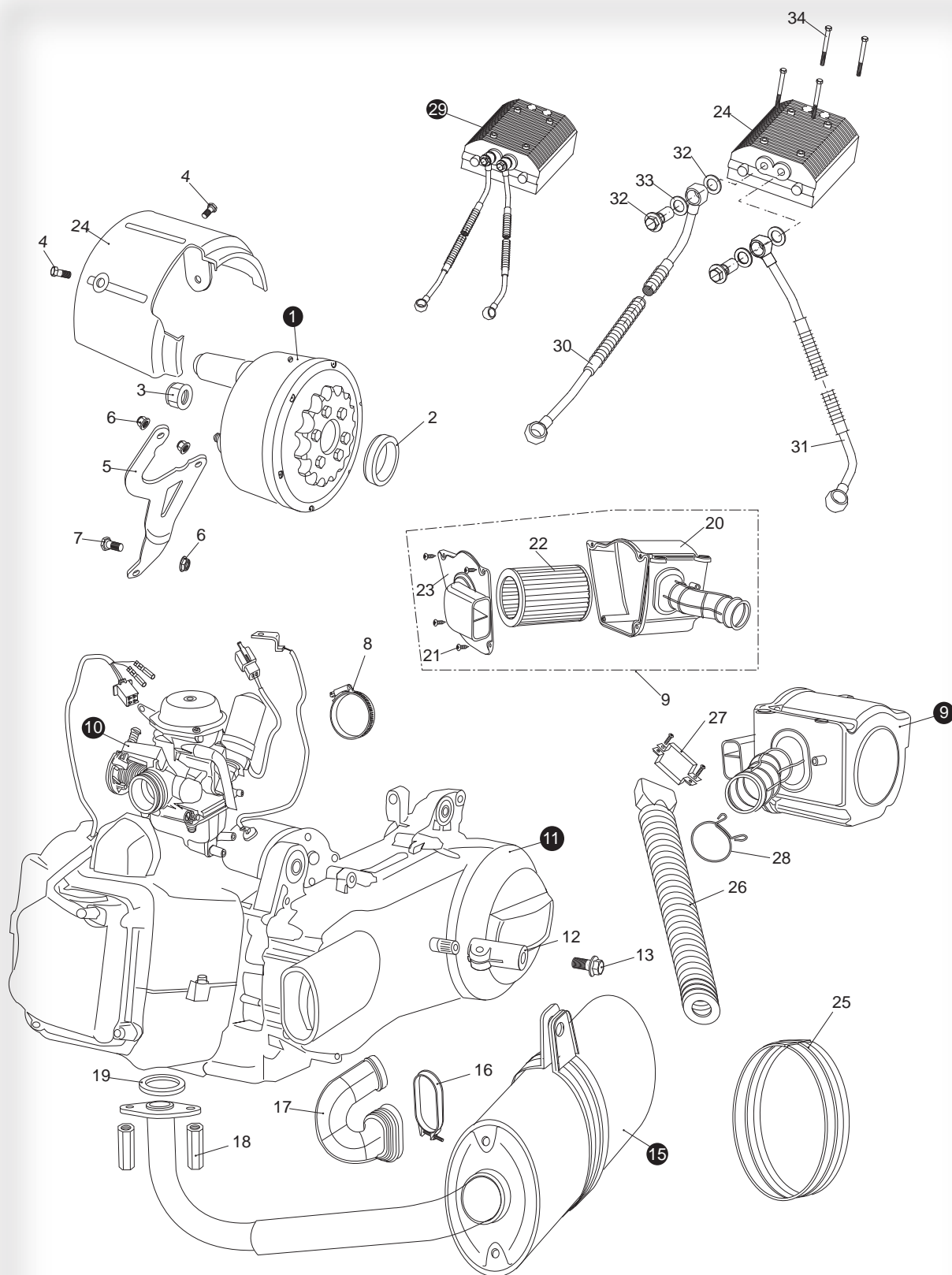


Fig. 20 REAR SWING ARM ASSY. UPPER

[illegible]

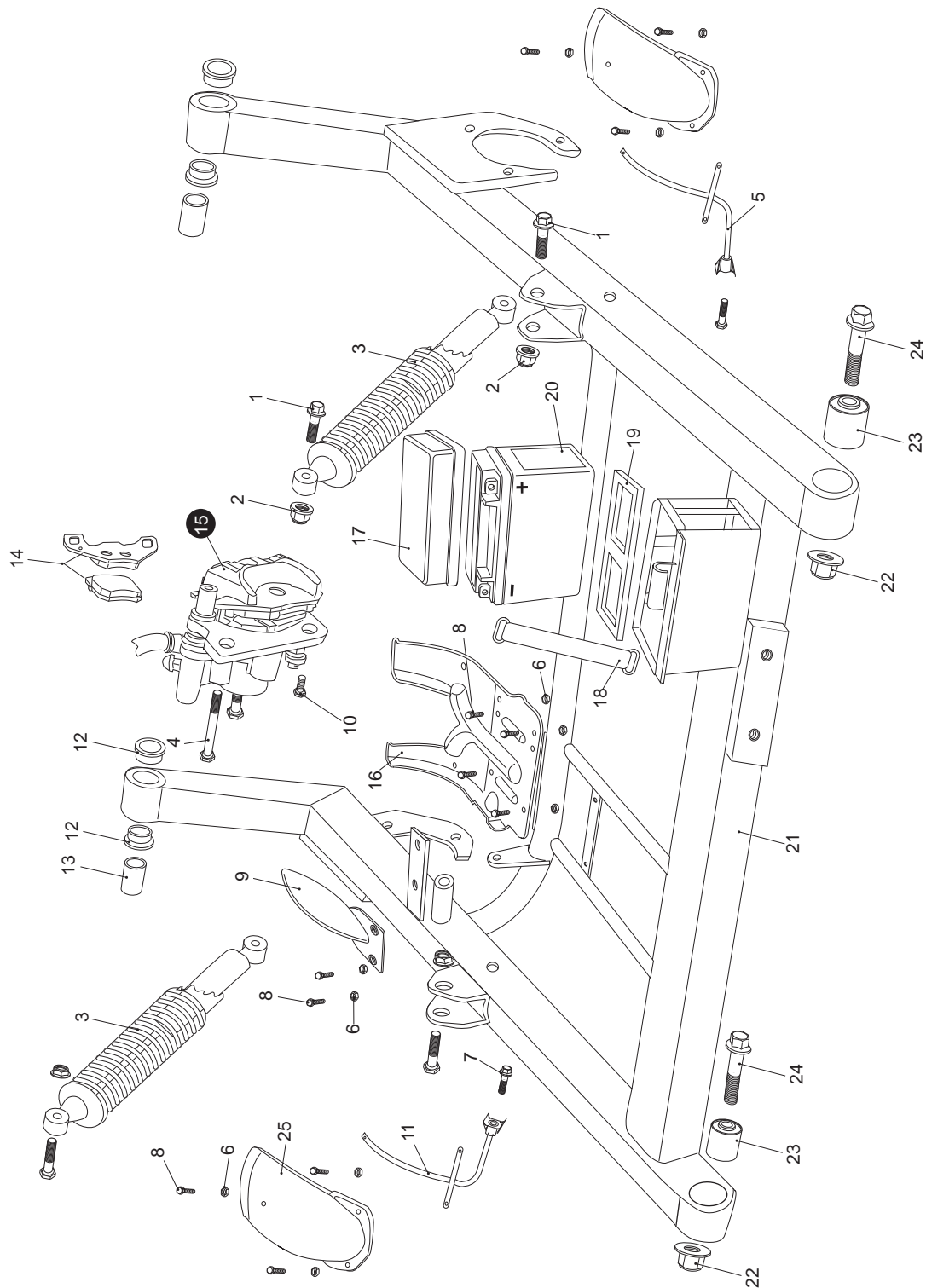
FIG.21

ENGINE/MUFFLER/AIR CLEANER/OIL COOLER



[illegible]

REAR SWING ARM



[illegible]

FIG.23

REAR HOUSING

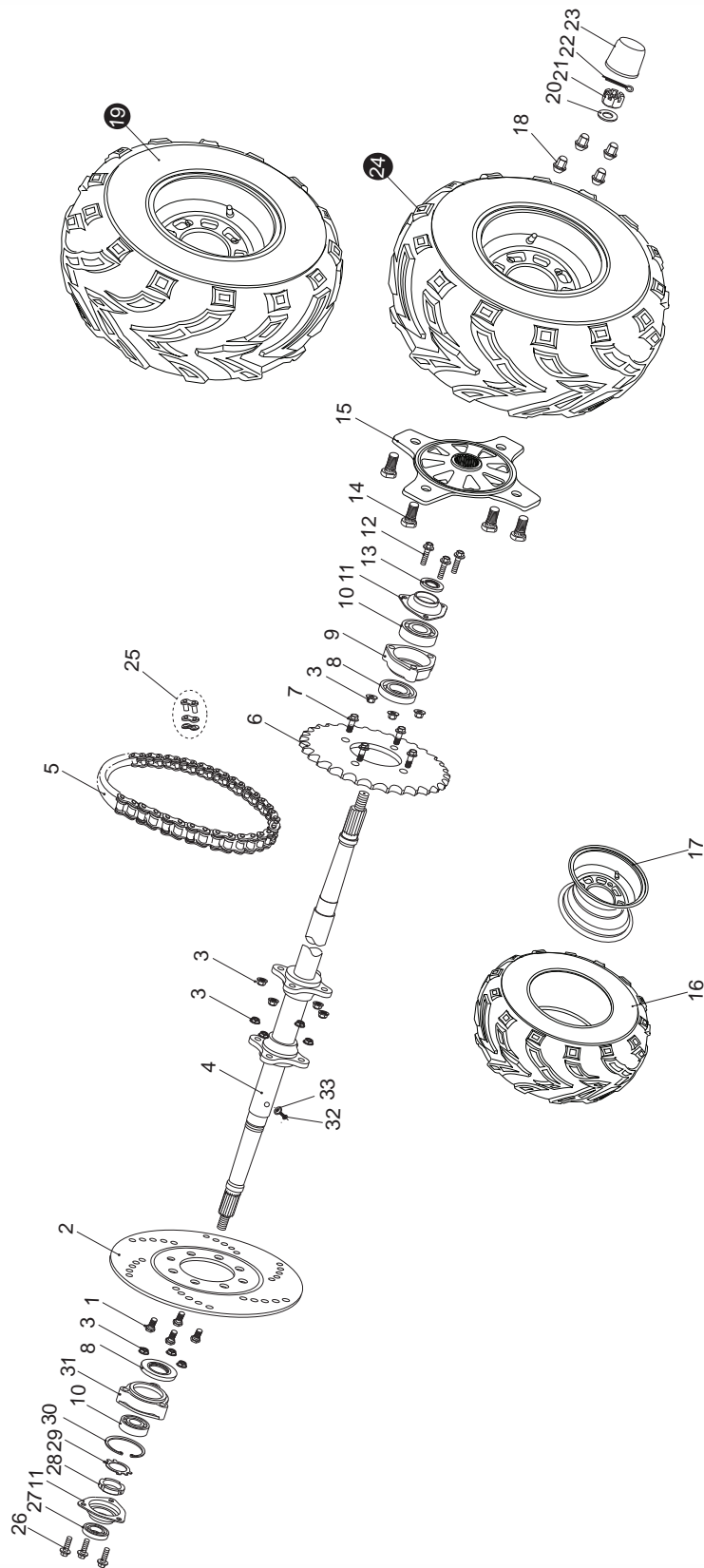
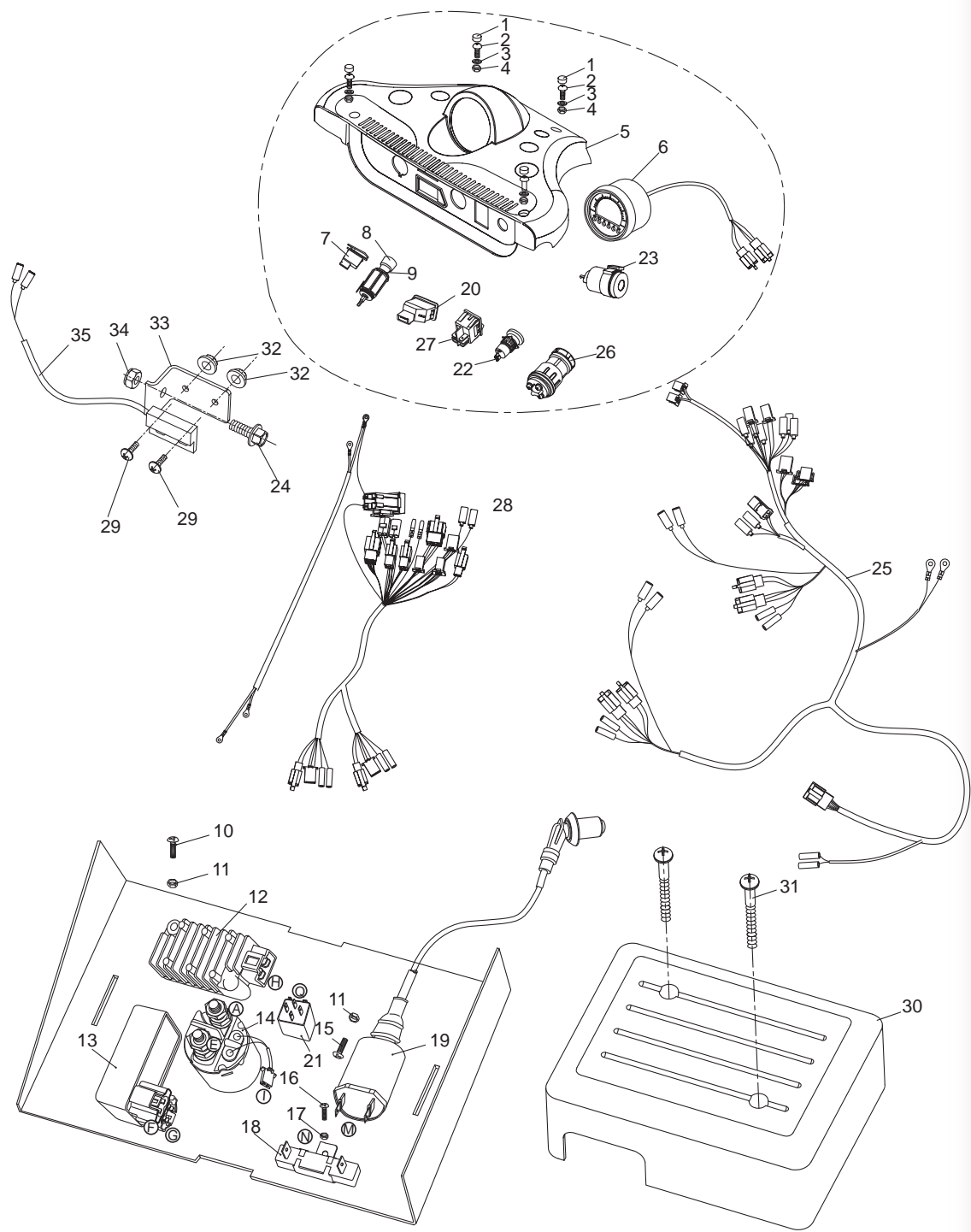


FIG. 23		REAR HOUSING	
REF NO.	PART NO.	DESCRIPTION	REQ NO.
1	500-1096	BOLT-WASHER M8x1.25x22	4
2	552-3014	BRAKE DISC. RR	1
3	500-1043	LOCKING FLANGE NUT M8	14
4	527-2813	REAR AXLE - GSR	1
5	539-3006	CHAIN O-RING DRIVE	1
6	539-3007	REAR SPROCKET	1
7	500-1027	BOLT-WASHER M8x1.25x27	4
8	539-3008	DUST SEAL 50X34-7	2
9	539-3009	AXLE BRG HOUSING COMP. RR	2
10	522-3002	BEARING 6206	2
11	522-3009	BEARING BASE	2
12	500-1026	BOLT-WASHER M8x1.25x40	6
13	539-3010	DUST SEAL 42X30-7	2
14	500-1019	TIRE BOLT M10x1.25x31	8
15	520-3005	REAR AXLE HUB	2
16	513-3001	TIRE. RR 22x10-10 =GSR/DLX	2
17	519-3005	RIM. RR 20X7X8 =GSR/DLX	2
18	500-1087	CAP LUG NUT M10	8
19	518-3016	REAR WHEEL ASSY. R	1
20	528-3002	SPACER. RR. WHEEL Φ 16	2
21	500-1037	CASTLE NUT M16	2
22	500-1100	COTTER PIN Φ 4X30	2
23	520-3004	COVER. RR. HUB	2
24	518-3015	REAR WHEEL ASSY. L	1
25	531-1002	CHAIN MASTER LINK	1
26	500-3030	BOLT-WASHER M8x1.25x45	3
27	540-2835	DUST SEAL 42X28-7	1
28	500-0201	ROUND NUT M30X1.5	1
29	540-2836	KEEPER	1
30	500-0801	CIRCLIP Φ 62	1
31	540-2833	AXLE BRG HOUSING COMP. RR	1
32	500-0401	SCREW PAN M3X8	1
33	540-2803	MAGNETIC STEEL	1

FIG.24

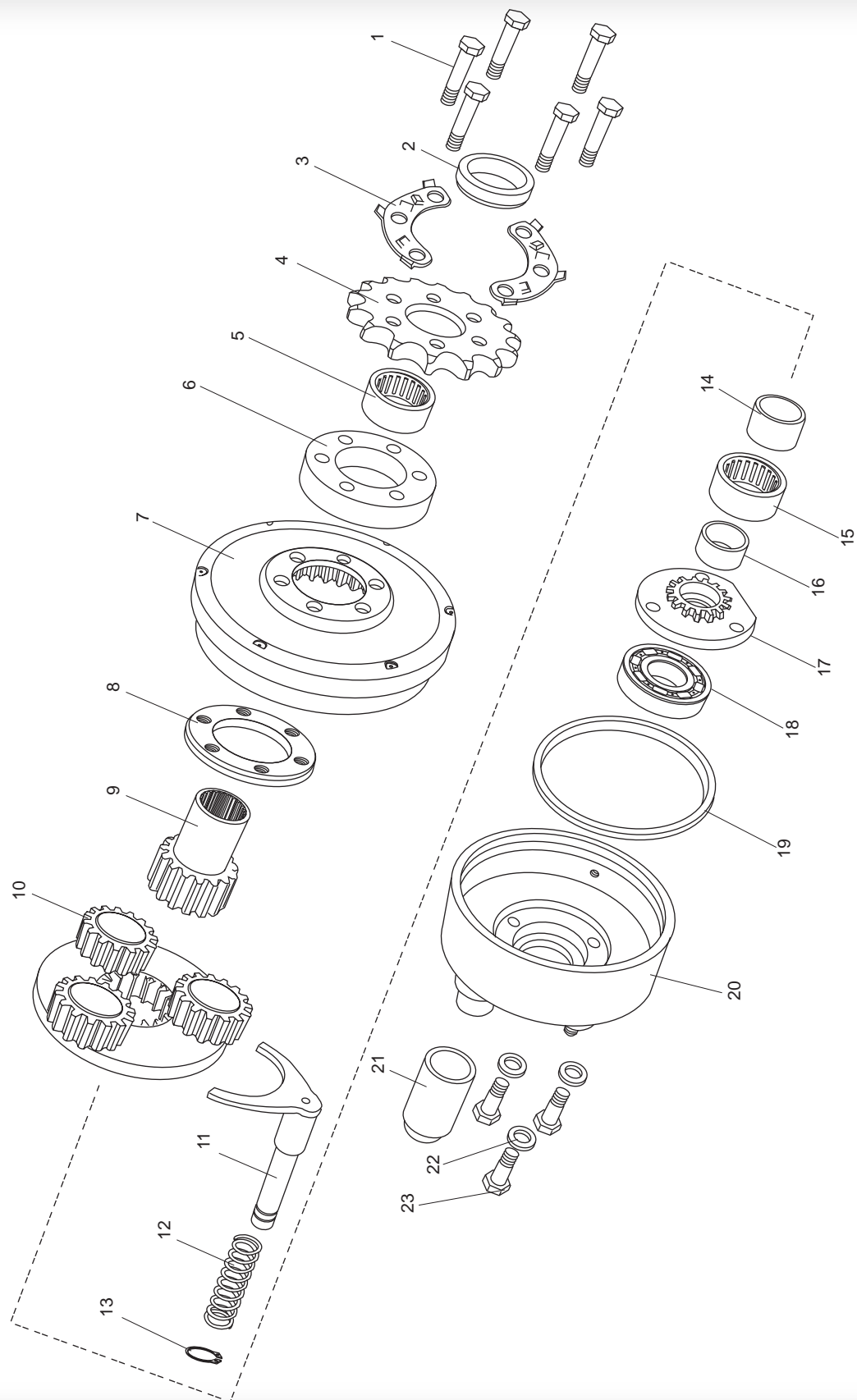
WIRE HARNESS/ELECTRICAL



[illegible]

FIG.25

REVERSE ASSY.



[illegible]

WARNING STICKERS



WARNING STICKERS

REF NO.	PART NO.	DESCRIPTION	REQ NO.
1	503-3000	LABEL. PARKING BRAKE	1
2	503-3001	REVERSE LEVER LABEL	1
3	503-3014	LABEL. CHAIN GUARD	1
4	503-3002	LABEL. NO LONG HAIR	1
5	503-3003	LABEL WARNING	1
6	503-3005	LABEL NO CLIMBING	1
7	503-3004	LABEL WARNING	1
8	503-3006	SEAT BELT LABEL	1
9	503-3015	DASHBOARD LABEL	1
10	503-3023	WEBSITE LABEL	2
11	503-3012	WARNING LABEL	1
12	503-3017	FUEL TANK LABEL-SILVER/BLUE	1
13	509-3020	L.SIDE PLATE LABEL LEFT	1
14	509-3021	R.SIDE PLATE LABEL RIGHT	1
15	503-2024	FRONT TALON LABEL	1
16	503-3022	SIDE RACK LABEL-SILVER/BLUE	2
17	503-3019	NOISE LABEL	1

Carter Brothers Mfg. Co., Inc.
1871 US Hwy 231
Brundidge, AL 36010
334.735.2301 - 800.523.5278
www.carterbro.com